

Baltimore House, Battersea Reach

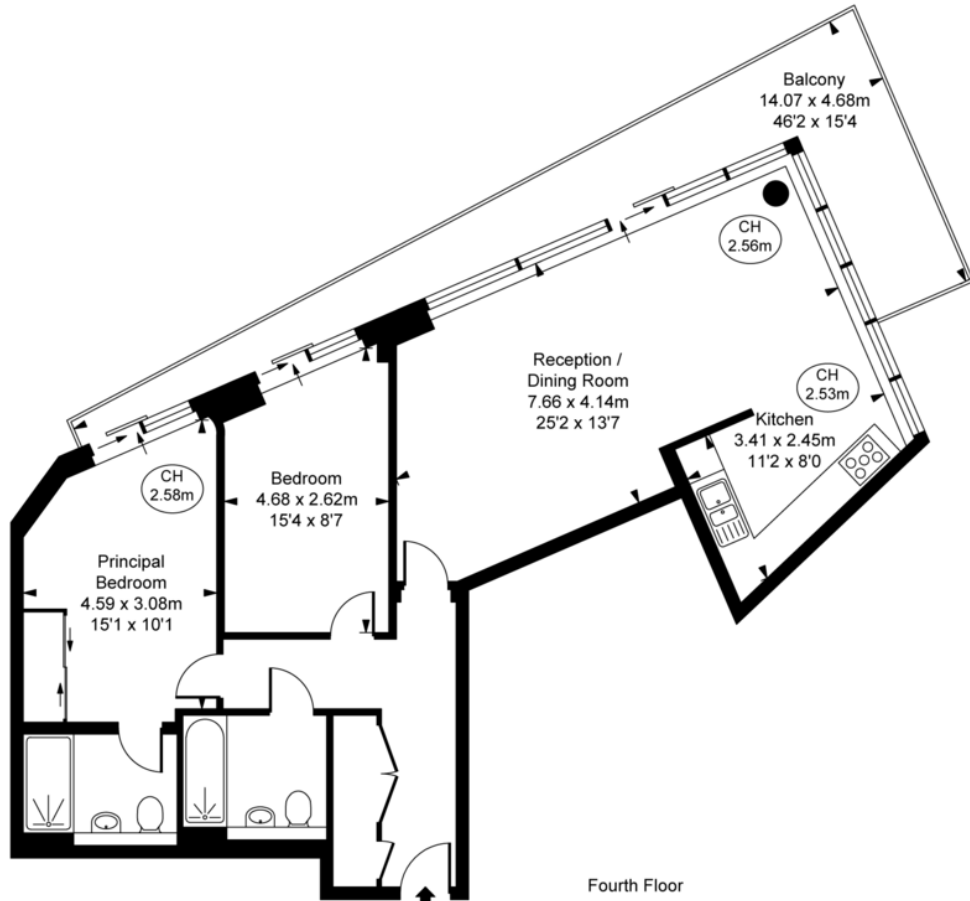
Wandsworth, SW18 1TS

PROPERTY SUMMARY

A stunning two bedroom apartment with river views, located on the fourth floor of this award winning riverside development covering in excess of 890 sq ft. The principle bedroom benefitting from built in mirrored wardrobes and a well appointed en suite shower room. The apartment is flooded with natural light from the floor to ceiling windows and features underfloor heating throughout. The sale includes one parking space (right to park).







Baltimore House,
Battersea Reach, SW18
Approximate Gross Internal Area
82.95 sq m / 893 sq ft
(CH = Ceiling Heights)



LOCAL AUTHORITY
Wandsworth Borough Council

TENURE
Leasehold

COUNCIL TAX BAND
Band F

VIEWINGS
By prior appointment only

Energy Efficiency Rating		Current	Potential
Very energy efficient - lower running costs			
(92-100) A			
(81-91) B		82	83
(69-80) C			
(55-68) D			
(39-54) E			
(21-38) F			
(1-20) G			
Not energy efficient - higher running costs			
England, Scotland & Wales		EU Directive 2002/91/EC	

Agents Note: Whilst every care has been taken to prepare these particulars, they are for guidance purposes only. All measurements are approximate and are for general guidance purposes only and whilst every care has been taken to ensure their accuracy, they should not be relied upon and potential buyers/tenants are advised to recheck the measurements



4 Vicentia Court
Bridges Wharf
London
SW11 3GY

02073522455
info@hgproperty.co.uk
www.hgproperty.co.uk