


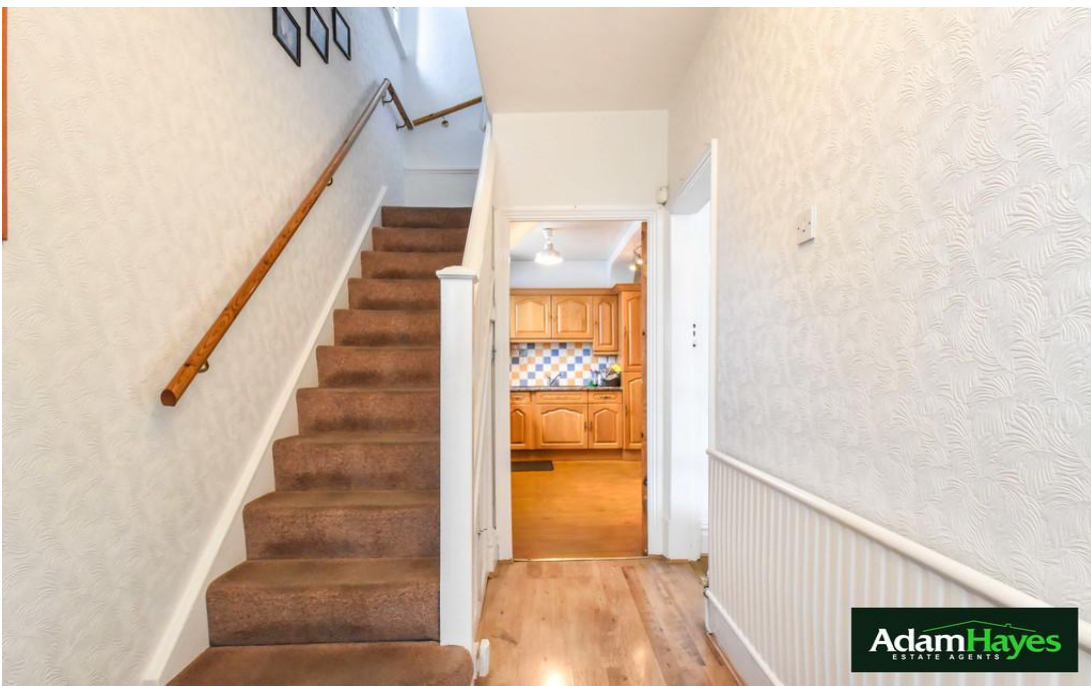


**Hollickwood Avenue, North Finchley, N12**

**£800,000**

 3 Bedrooms  1 Bathrooms  2 Receptions





North Finchley Office

365 Ballards Lane, North Finchley, London, N12 8LL

Tel: 020 8445 4008 Email: [info@adam-hayes.co.uk](mailto:info@adam-hayes.co.uk) Web: [www.adam-hayes.co.uk](http://www.adam-hayes.co.uk)



# Hollickwood Avenue, North Finchley, N12

## £800,000

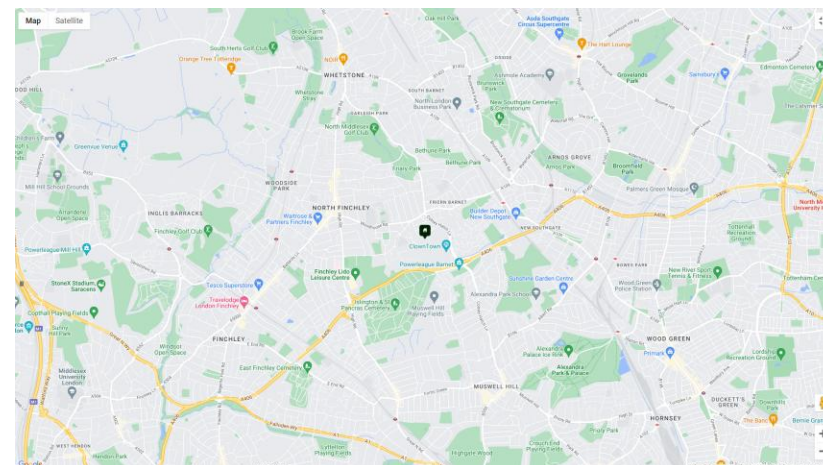
 3 Bedrooms  1 Bathrooms  2 Receptions

### Key Features

- Three Bedrooms
- Semi Detached
- Parking
- Garage
- Modern Kitchen
- Guest Cloakroom

### Other Information

- Tenure: Freehold
- Council Tax Band: E

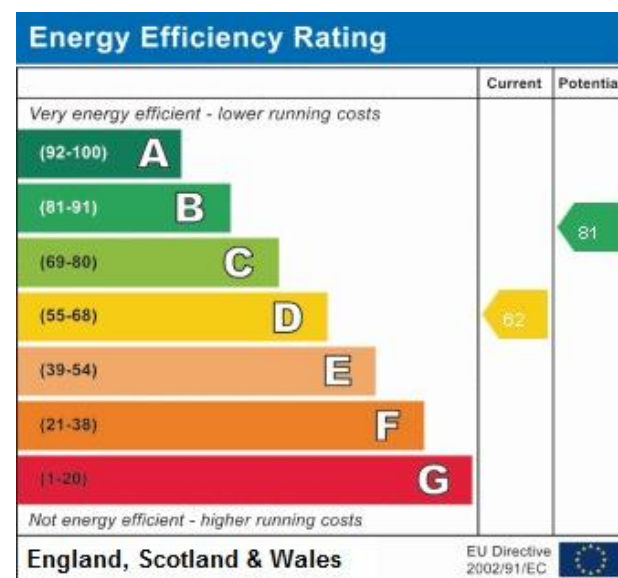


### Nearest Stations

New Southgate Station	0.7 miles
Arnos Grove Station	1.2 miles
Woodside Park Station	1.3 miles

### Property Description

Situated in this residential turning off Lyndhurst Avenue and conveniently located within close proximity to local shops, transport facilities and set within the catchment area for a number of popular schools is this extended three bedroom semi-detached house. The property benefits from a shared drive to garage, a guest cloakroom, a modern approximately 18ft kitchen diner, a modern shower room and off street parking. However to really appreciate the size, location and condition an internal viewing is highly recommended via vendors Sole Agents Adam Hayes Estate Agents.



North Finchley Office

365 Ballards Lane, North Finchley, London, N12 8LL

Tel: 020 8445 4008 Email: [info@adam-hayes.co.uk](mailto:info@adam-hayes.co.uk) Web: [www.adam-hayes.co.uk](http://www.adam-hayes.co.uk)



Total floor area 123.0 sq.m. (1,324 sq.ft.) approx

This plan is for illustration purposes only and may not be representative of the property. Plan not to scale.

These particulars, whilst believed to be accurate, are set out as a general outline only for guidance and do not constitute any part of an offer or contract. Intending purchasers or prospective tenants should not rely on them as statements or representation of fact, but must satisfy themselves by inspection or otherwise as to their accuracy. We have not carried out a detailed survey, not tested the services, appliances and specific fittings. Room sizes should not be relied upon for carpets and furnishings. The measurements given are approximate. No person in this firm's employment has the authority to make or give any representation or warranty in respect of the property.