







### Property Summary

A centrally located Victorian inner terrace house with two bedrooms and a bathroom upstairs. Freehold with a small private garden. No chain.

### Property Features

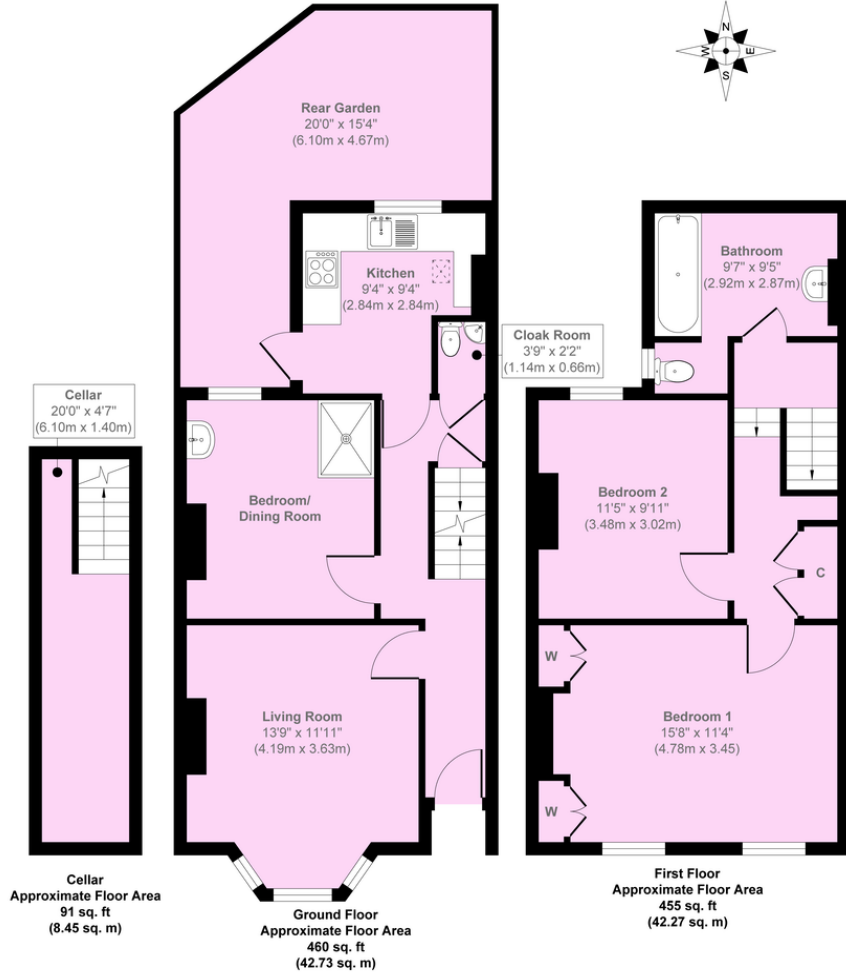
- FREEHOLD
- VICTORIAN HOUSE
- TWO DOUBLE BEDROOMS
- UPSTAIRS BATHROOM
- TWO RECEPTION ROOMS
- MODERN KITCHEN
- DOWNSTAIRS CLOAKROOM
- CELLAR
- CENTRAL HEATING
- DOUBLE GLAZING





Bradgate Road

**Mark Beaumont**  
markbeaumont.com



**Approx. Gross Internal Floor Area 1006 sq. ft / 93.46 sq. m**

Illustration for identification purposes only, measurements are approximate, not to scale.

Copyright © markbeaumont.com

Produced by Elements Property

%epcGraph\_c\_1\_225%

South London Branch, 197 Lewisham  
High Street, London, SE13 6AA

www.markbeaumont.com  
sales@markbeaumont.com  
020 8852 5000

Agents Note: Whilst every care has been taken to prepare these particulars, they are for guidance purposes only. All measurements are approximate and for general guidance purposes only and whilst every care has been taken to ensure their accuracy, they should not be relied upon and potential buyers are advised to recheck the measurements.