

**Spacious 2<sup>nd</sup> floor, 2 bedroom apartment with 2 shower rooms and open plan living accommodation.**

This spacious apartment offers a wonderful lifestyle with the luxury of 2 en-suite bathrooms, large double bedrooms, vaulted ceilings and a contemporary open plan living area. The kitchen has twin electric ovens, washing machine, dishwasher, gas hob, fridge and freezer. There is also a separate cloakroom with WC for visitors. There are communal gardens around the development and allocated parking. The location is ideal with both Redhill and Reigate train stations being within walking distance.



Lease 107 years
Maintenance £2,100 per year
Ground rent £300 per year
CHAIN FREE
GUIDE PRICE £357,500



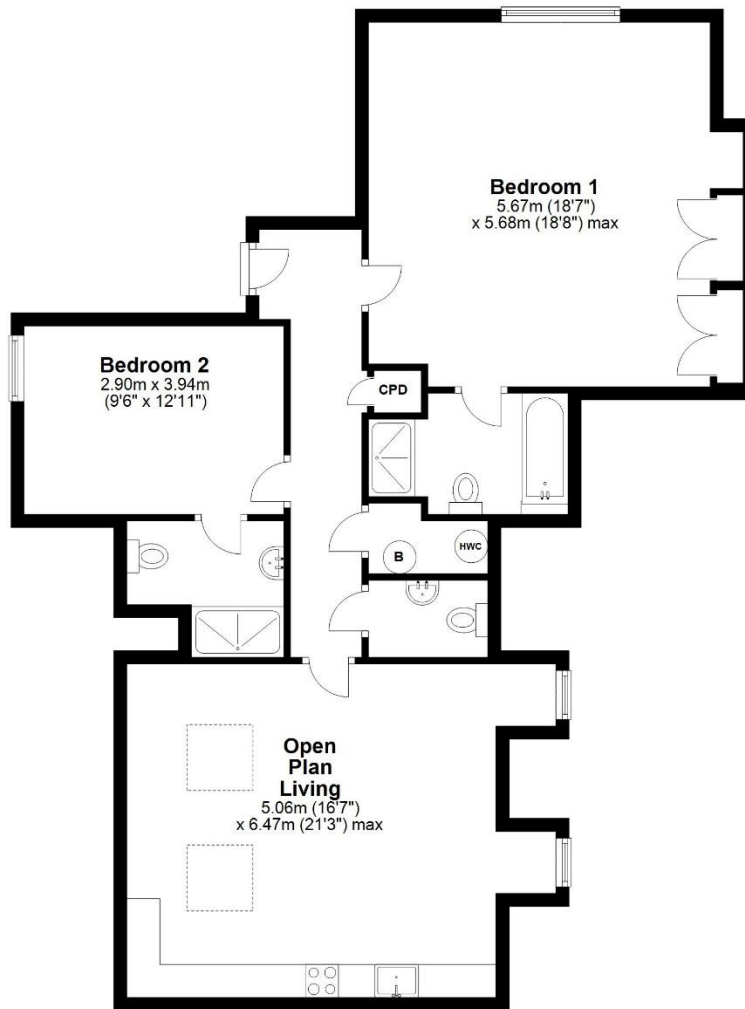
**Flat 5, Braemore Lodge, Fitzroy Place, Reigate, RH2 7AR**

- 2 double bedrooms.
- Sitting/dining room open plan to kitchen with vaulted ceiling. Ample space to entertain and relax.
- Bed 1 with en-suite bathroom, bed 2 with en-suite shower room.
- Fitted kitchen with vaulted ceiling open plan to sitting/ dining area.
- Separate cloakroom with WC.
- 1 allocated parking space.
- Walking distance to Redhill and Reigate train stations.
- CHAIN FREE



## Second Floor

Approx. 101.4 sq. metres (1091.2 sq. feet)



Total area: approx. 101.4 sq. metres (1091.2 sq. feet)

Produced by Lewis White, not to scale and indicative only  
Plan produced using PlanUp.

Council tax band: E

EPC Rating: C

CHAIN FREE



**PRS** Property Redress Scheme

lewis white

Lewis White Estate Agents Ltd, Somers House, Linkfield Corner, Redhill, RH1 1BB

www.lewiswhite.net info@lewiswhite.net

01737 245779