



Esgair-Y-Maes, offers in excess of £360,000

- Four Bedroom
- Detached
- Sought After Area
- Well Presented
- Viewing Recommended
- EPC Rating: C



 4  2  1



About the property

A beautifully presented four bedroom detached property offered for sale in the popular area of Broadlands with no on going chain. The property is within close proximity to local schools, shops and other amenities.

Accommodation

Entrance Hall

Laminate flooring.

Lounge

23' 1" x 9' 5" (7.04m x 2.87m)

Carpeted flooring, electric fire and surround, bay window to front, UPVC doors to rear.

Dining Room

15' 10" x 7' 6" (4.83m x 2.29m)

Carpeted flooring, UPVC windows to front and side.

Kitchen

11' 4" x 9' 6" (3.45m x 2.90m)

Matching wall and base units, gas hob and electric oven, tiled flooring, window overlooking the garden.



Utility Room

6' 3" x 4' 8" (1.91m x 1.42m)

Sink, under worktop space for a washing machine, UPVC door to garden.

Ground Floor Cloakroom

W.C. and wash hand basin.

First Floor Landing

Carpeted flooring, boiler, access to boarded attic.

Bedroom One

13' x 9' 8" (3.96m x 2.95m)

Master bedroom with UPVC window to front, built-in wardrobe, carpeted flooring.

Ensuite Shower Room

Three piece suite comprising W.C., wash hand basin and shower cubicle, tiled walls and flooring, obscure glass window, electric shaver point.

Bedroom Two

12' x 7' 7" (3.66m x 2.31m)

Laminate flooring, built-in wardrobe, UPVC window to rear.

Bedroom Three

9' 9" x 7' 6" (2.97m x 2.29m)

Built in single wardrobe, carpeted flooring, UPVC window.

Bedroom Four

8' 2" x 8' 2" (2.49m x 2.49m)

UPVC window to front, carpeted flooring.

Bathroom

Three piece suite comprising W.C., wash hand basin and bath with overhead shower, tiled walls, obscure glass window.

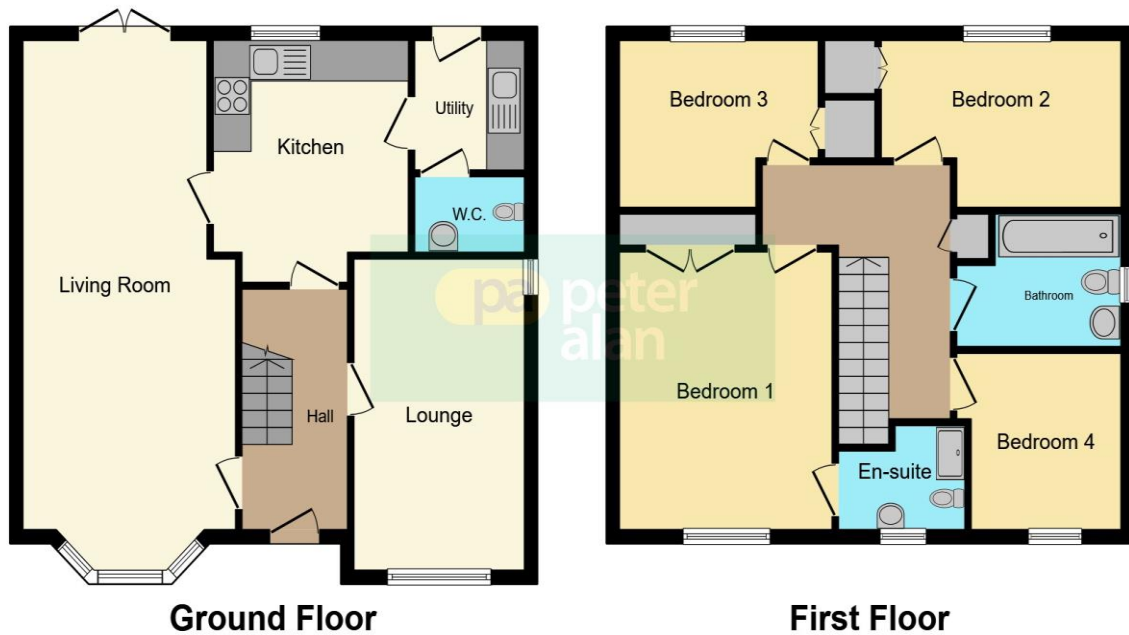
Rear Garden

Two tier garden with areas of patio and lawn.

01656 657201

bridgend@peteralan.co.uk

Floorplan



This floorplan is for illustrative purposes only and is not drawn to scale. Measurements, floor-areas, openings and orientations are approximate. They should not be relied upon for any purpose and do not form any part of an agreement. No liability is taken for any error or mis-statement. All parties must rely on their own inspections.

Important Information

Note while we endeavour to make our sales details accurate and reliable, if there is any point which is of particular interest to you, please contact the office and we will be pleased to confirm the position for you. We have not personally tested any apparatus, equipment, fixtures, fittings or services and cannot verify they are in working order or fit for their purposes. Nothing in these particulars is intended to indicate that carpets or curtains, furnishings or fittings, electrical goods (whether wired or not). Gas fires or light fittings or any other fixtures not expressly included form part of the property offered for sale. This computer generated Floorplan, if applicable, is intended as a general guide to the layout and design of the property. It is not to scale and should not be relied upon for dimensions. Tenure: We cannot confirm the tenure of the property as we have not had access to the legal documents. The buyer is advised to obtain verification from their solicitor or surveyor.

Peter Alan Limited is registered in England and Wales under company number 2073153. Registered Office is Cumbria House, 16-20 Hockliffe Street, Leighton Buzzard, Bedfordshire, LU7 1GN. VAT Registration Number is 500 2481 05. For activities relating to regulated mortgages and non-investment insurance contracts, Peter Alan Limited is an appointed representative of Connells Limited which is authorised and regulated by the Financial Conduct Authority. Connells Limited's Financial Services Register number is 302221. Most buy-to-let