



Waterloo Terrace, offers over £150,000

- Garage
- Three Bedrooms
- Well-Presented
- Ideal Location
- Lounge/Dining Room
- EPC Rating: D



 3  2  2



About the property

Peter Alan are delighted to welcome to the market this well presented home in Pontlottyn.

The ground floor comprises an open plan lounge/dining room, kitchen with plenty of cupboard space and ground floor WC.

The first floor offers three good sized bedrooms, two with fitted wardrobes.

The rear garden is split over three levels with patio and lawn and access to the garage.

The location of this property is ideal due to being close to local amenities, schools and having excellent transport links.

We believe this property would make the perfect first home!



Accommodation

Entrance Hall

3' 2" x 21' 10" (0.97m x 6.65m)
Stairs to first floor landing. Door to;

Reception Room

12' 8" x 21' 10" (3.86m x 6.65m)
Windows to front and rear. Door to;

Kitchen

9' 5" x 14' 8" (2.87m x 4.47m)
Windows to side and rear, fitted units. Door to;

W.C

4' 3" x 4' 10" (1.30m x 1.47m)
W.C, wash hand basin.

First Floor Landing

6' 2" x 14' 1" (1.88m x 4.29m)
Doors to;

Bedroom One

9' 8" x 14' 4" (2.95m x 4.37m)
Window to front, fitted wardrobes. Door to;

Bedroom Two

8' 2" x 15' 4" (2.49m x 4.67m)
Window to rear, fitted wardrobes. Door to;

Bedroom Three

5' 9" x 9' 5" (1.75m x 2.87m)
Window to front.

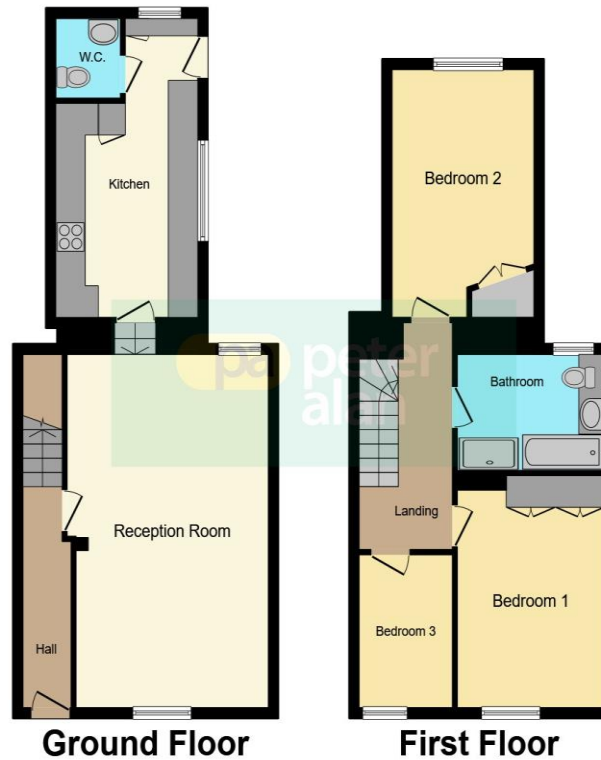
External

Hard standing steps leading to split level garden with lawn and patio.

01685 722223

merthytydfil@peteralan.co.uk

Floorplan



This floorplan is for illustrative purposes only and is not drawn to scale. Measurements, floor-areas, openings and orientations are approximate. They should not be relied upon for any purpose and do not form any part of an agreement. No liability is taken for any error or mis-statement. All parties must rely on their own inspections.

Important Information

Note while we endeavour to make our sales details accurate and reliable, if there is any point which is of particular interest to you, please contact the office and we will be pleased to confirm the position for you. We have not personally tested any apparatus, equipment, fixtures, fittings or services and cannot verify they are in working order or fit for their purposes. Nothing in these particulars is intended to indicate that carpets or curtains, furnishings or fittings, electrical goods (whether wired or not). Gas fires or light fittings or any other fixtures not expressly included form part of the property offered for sale. This computer generated Floorplan, if applicable, is intended as a general guide to the layout and design of the property. It is not to scale and should not be relied upon for dimensions. Tenure: We cannot confirm the tenure of the property as we have not had access to the legal documents. The buyer is advised to obtain verification from their solicitor or surveyor.

Peter Alan Limited is registered in England and Wales under company number 2073153, Registered Office is Cumbria House, 16-20 Hockliffe Street, Leighton Buzzard, Bedfordshire, LU7 1GN. VAT Registration Number is 500 2481 05. For activities relating to regulated mortgages and non-investment insurance contracts, Peter Alan Limited is an appointed representative of Connells Limited which is authorised and regulated by the Financial Conduct Authority. Connells Limited's Financial Services Register number is 302221. Most buy-to-let