



## **2 Bedroom Apartment Cranes Park, Surbiton. £500,000 Share of Freehold**

Located within the Cranes Park Conservation area we are delighted to offer this top floor, 2 double bedroom apartment.

This wonderful contemporary apartment, boasts 1,102 sq ft of internal living space, including a spacious 32.1 x 14.6 ft open plan kitchen/dining/living room and stairs to a mezzanine level.

2 Double Bedrooms both with eaves storage, and a modern family bathroom.

The mezzanine level measures 13.11 x 12.7 ft with Velux windows.

The property also benefits from a communal garden, off road parking and a 999 year lease from 2018.

Ideally located in a leafy Surbiton Road within easy access to Surbiton Mainline Station with frequent fast trains to London Waterloo.

Please contact us today to arrange your appointment to view.

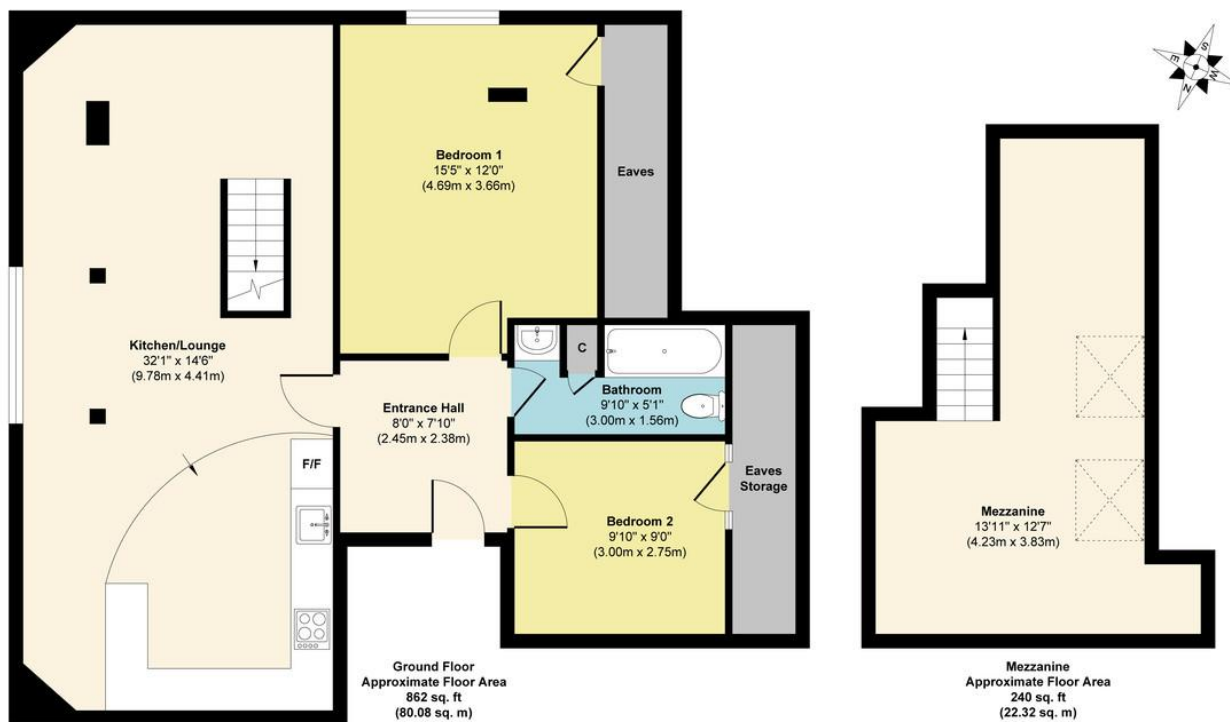
[WWW.STACKANDBONNER.COM](http://WWW.STACKANDBONNER.COM)

020 8974 8844

[kingston.sales@stackandbonner.com](mailto:kingston.sales@stackandbonner.com)







**Approx. Gross Internal Floor Area 1102 sq. ft / 102.40 sq. m**  
Illustration for identification purposes only, measurements are approximate, not to scale.  
 Produced by Elements Property

- 2 Bedroom Top Floor Apartment
- 1,102 sq ft of Internal Living Space
- 21.1 x 14.6 Living/Kitchen/Dining Room
- 13.11 x 12.7 Mezzanine Level
- 2 Double Bedrooms with Eaves Storage
- Modern Family Bathroom
- Communal Gardens
- Off Road Parking
- 994 year lease
- Service Charge: £1,999 per annum