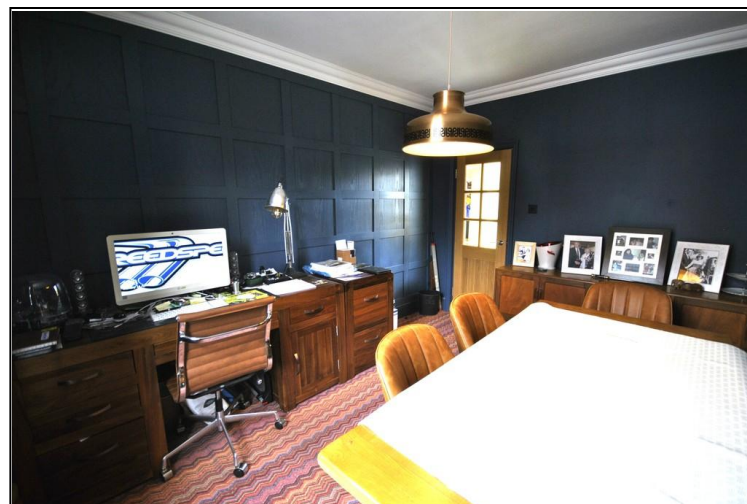


PORTFIELD

GARRARD & WRIGHT

INDEPENDENT ESTATE AGENTS • SURVEYORS & VALUERS RESIDENTIAL LETTING AGENTS • NEW HOME SALES



20 George Street

Dont miss this STUNNING 3 double bedroom detached family home EXTENDED with beautiful living room and BI-FOLD doors, modern oak kitchen and Range, contemporary shower room, STYLISH decoration, comprises: entrance hallway, lounge, dining room with panelled wall, kitchen with RANGE & appliances, living room, cellar, landing, 3 bedrooms, study, shower room and separate WC, gas heating, double glazing, off road parking, DRIVEWAY, courtyard garden. Viewing highly recommended.

OFFERS IN REGION OF
£325,000