



PHILLIPS & STILL

PORTLAND VILLAS, HOVE
GUIDE PRICE £140,000





FIRST FLOOR

STUDIO ROOM / KITCHEN

14' 10" x 10' 5" (4.54m x 3.20m)

BATHROOM

Here we have a first floor studio apartment which is light & very well presented throughout having been modernised to a high standard. It will make a perfect first time buy, investment property or second holiday home near the sea as it really does tick all the boxes!

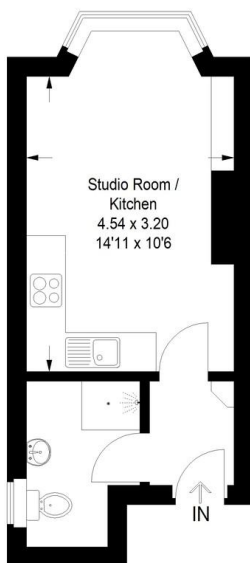
The studio room has painted open brick feature walls and benefits from a large double glazed window and electric heating. The stylish kitchen and bathroom are very modern and newly fitted. Both are well arranged meaning space for other furniture such as bed or sofas are easily acquirable. The property is ready for someone to pack their bags & move straight into without having to lift a finger or spend a penny!

And this location really could not be any better! Portland Villas is one of West Hove's premier roads and is positioned right below the vibrant Portland Road and moments from our famous seafront promenade. Step out of your front door and you are just a stone's throw away from a huge variety of trendy coffee shops, bars, fine restaurants, cafes, supermarkets, gyms, beauty parlours & a wealth of boutique shops.

Hove's seafront and Lagoon are also on your door step with local bus routes & Brighton railway station also extremely close by for anyone who commutes. The property is being sold with NO onward chain so you'll need to be quick on this one!

Portland Villas, Hove, BN3 5SB

Approximate Gross Internal Area
22.7 sq m / 244 sq ft



First Floor

Illustration for identification purposes only,
measurements are approximate, not to scale.
Imageplansurveys @ 2022

EPC TBC

Agents Note: Whilst every care has been taken to prepare these sales particulars, they are for guidance purposes only. All measurements are approximate and for general guidance purposes only and whilst every care has been taken to ensure their accuracy, they should not be relied upon and potential buyers are advised to recheck the measurements

