



3 Bedroom Town House £287,000

32 Vistula Crescent, Haydon End, Swindon, Wiltshire, SN25 1QE

mcfarlane
property.com

3 Bedroom Town House North Swindon

- Large Living / Dining Room
 - Master Suite with Dressing Room and En-suite
 - Garage and off Road Parking
 - Town House
-

What a great family home!! With a large living dining room that is flooded with light, Master suite on the top floor with dressing room and en-suite as well as two additional bedrooms and family bathroom. Situated in the very popular Haydon End location close to local facilities.





We 
where you
LIVE

Our team are friendly, experienced and are all local. They know it better than they do their own living rooms and can help you find what you're looking for because **we love where we live.**

We would be delighted to show you around this property.

**Because every home
needs a personal touch.**

**If you would like to view this
property then please get in touch.**

 01793 296600

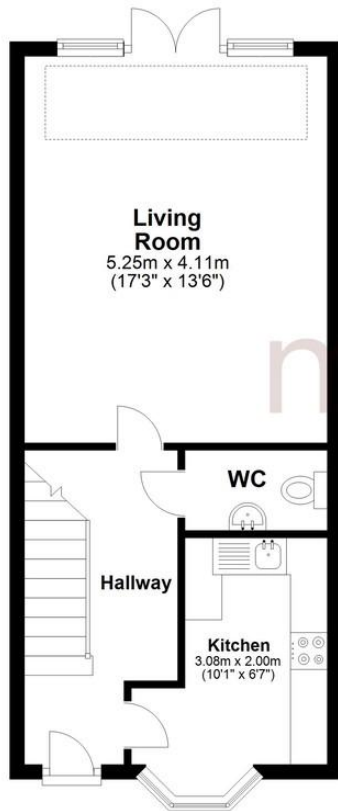
 swindon@mcfarlaneproperty.com

mcfarlaneproperty.com

Agents Note: Whilst every care has been taken to prepare these sales particulars, they are for guidance purposes only. All measurements are approximate and are for general guidance purposes only and whilst every care has been taken to ensure their accuracy, they should not be relied upon and potential buyers are advised to recheck the measurements

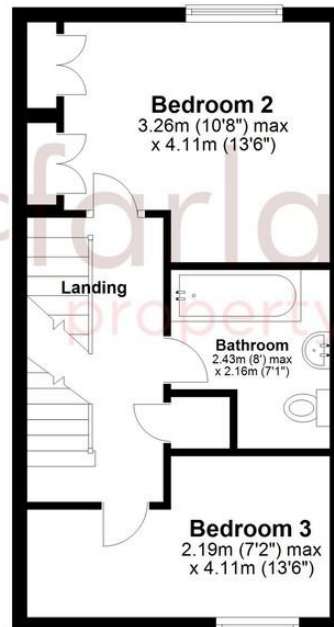
Ground Floor

Approx. 39.6 sq. metres (426.7 sq. feet)



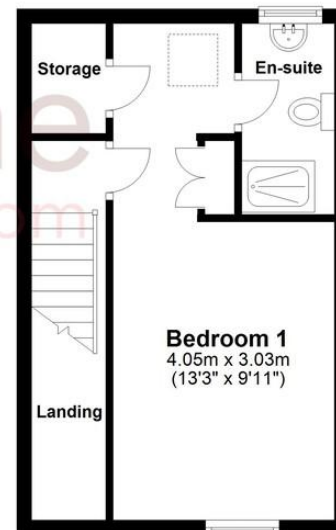
First Floor

Approx. 32.8 sq. metres (353.1 sq. feet)



Second Floor

Approx. 27.6 sq. metres (297.6 sq. feet)



Total area: approx. 100.1 sq. metres (1077.5 sq. feet)

mcfarlane
property.com

Cricklade.

102 High Street
Cricklade SN6 6AA

 01793 751044

Marlborough.

106 High Street
Marlborough SN8 1LT

 01672 514380

Old Town.

28-30 Wood Street
Swindon SN1 4AB

 01793 296880

Swindon.

The Village Centre,
Redhouse SN25 2FW

 01793 296600