



**NET**   
**LETTINGS**  
**.COM**

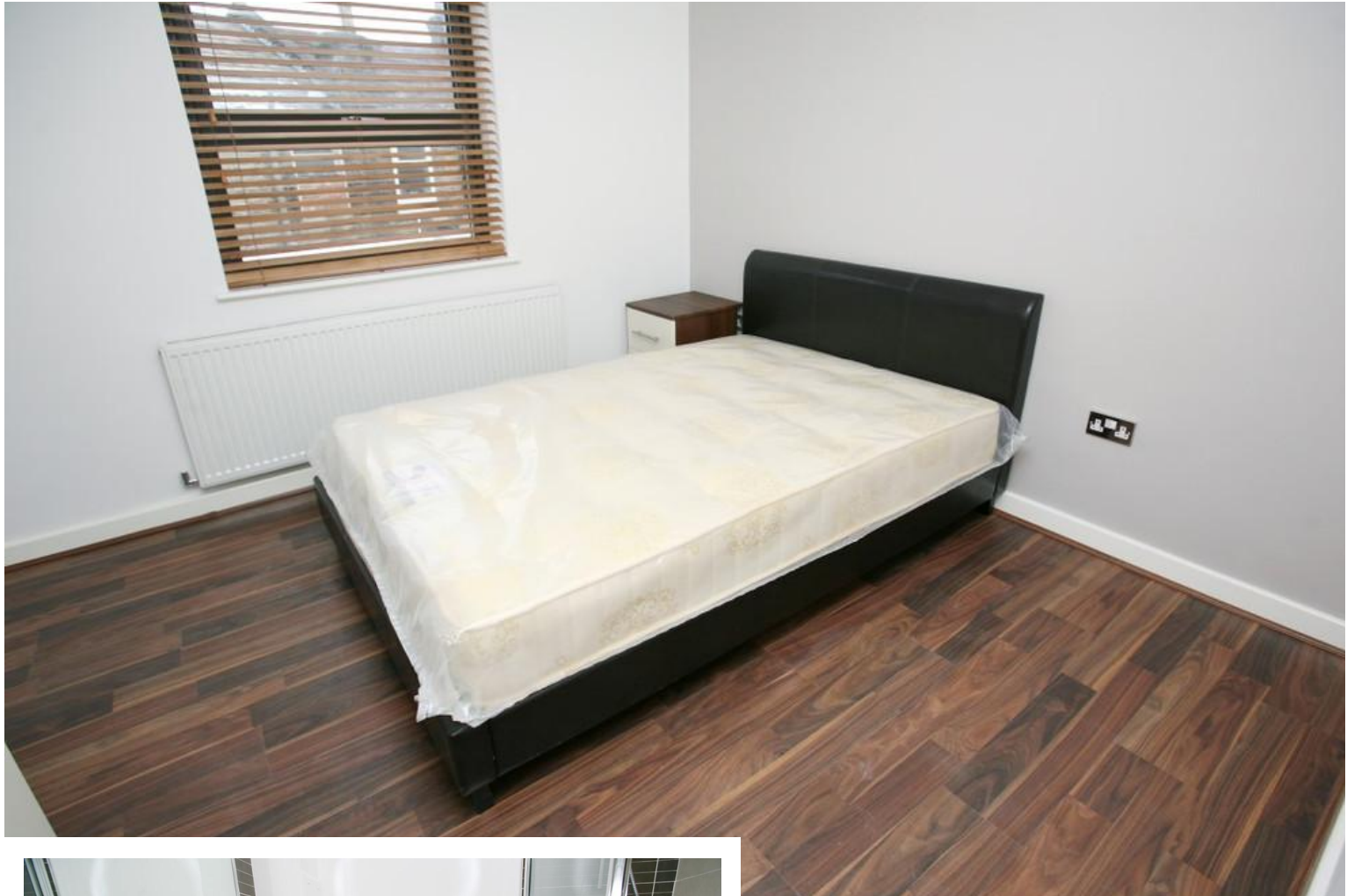
- Newly Refurbished
- Open-Plan Kitchen/Lounge
- Modern Neutral Decor
- Wooden Floors

**Flat 4, Green Lane**

Ilford, Essex, IG1 1XG

**£1,500 pcm Fees Apply**





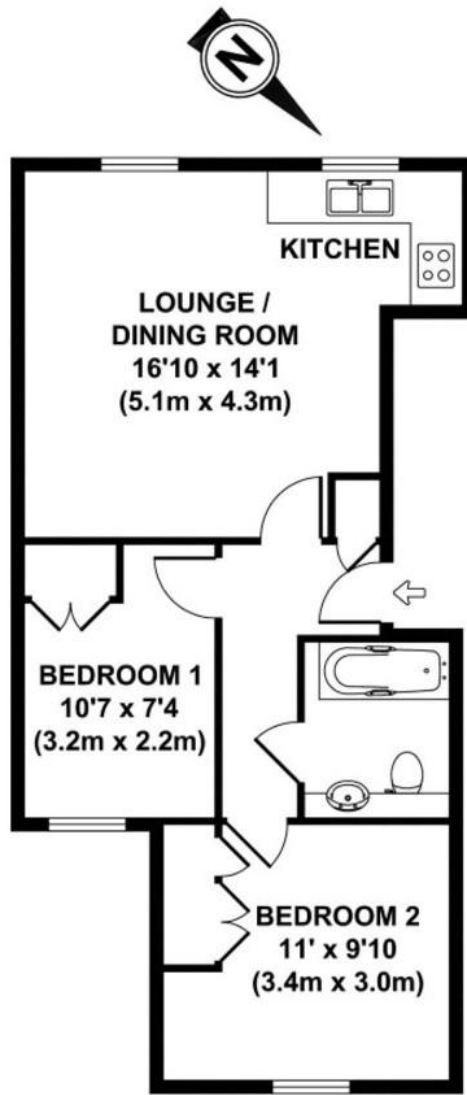
## Property Description

%full\_description\_title[b,br,#0a3646]\_dim[i]%









**GREEN LANE FLAT 4**

**Viewings**

By Appointment only

**Council Tax Band**

Band B

**Local Authority**

Redbridge London Borough Council

Energy Efficiency Rating		Current	Potential
<i>Very energy efficient - lower running costs</i>			
(92-100) <b>A</b>			
(81-91) <b>B</b>		82	82
(69-80) <b>C</b>			
(55-68) <b>D</b>			
(39-54) <b>E</b>			

**Registered Office**

Suite C, 36-40 Copperfield Road, London, E3 4RR /08050057

Find us on

www.netlettings.com  
 management@netlettings.com  
 020 8981 5551

mydeposits.co.uk



rightmove find your happy

Zoopla.co.uk



Agents Note: Whilst every care has been taken to prepare these particulars, they are for guidance purposes only. All measurements are approximate are for general guidance purposes only and whilst every care has been taken to ensure their accuracy, they should not be relied upon and potential tenants are advised to recheck the measurements.