



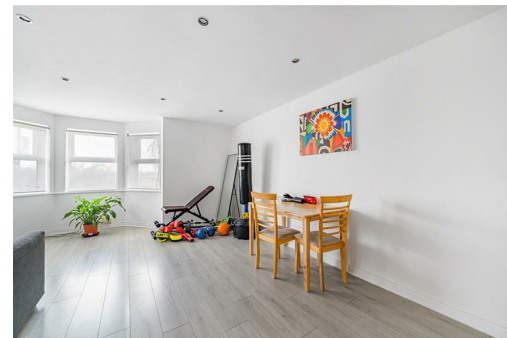
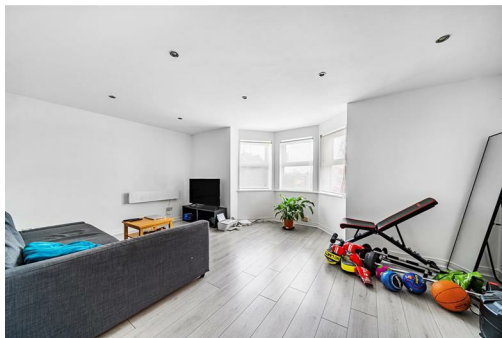
Matthew James

St James House | St James Road | Surbiton | Surrey KT6 4QH

T: +44 (0) 20 8390 2266

E: enquiries@matthewjamesestateagents.co.uk

www.matthewjamesestateagents.co.uk



Portsmouth Road, Surbiton, KT6 4HS

An excellent, good-size two-double bedroom ground floor apartment with parking. Located opposite the Thames, within a short walk of Surbiton mainline station and high street. The many benefits include a spacious lounge dining room. A modern, well-equipped kitchen including an integral double oven, hob and hood. A large double bedroom with built-in wardrobes and a double second bedroom. Plus a modern white bathroom suite with a shower over the bath. There is a welcoming entrance hallway with a large storage cupboard. Double glazing and electric heating. Well maintained communal areas and parking to the rear. Sold with a Share of the Freehold and lease which is being extended. Council tax band D. We are informed the service charge is £1500 pa. No onward chain.

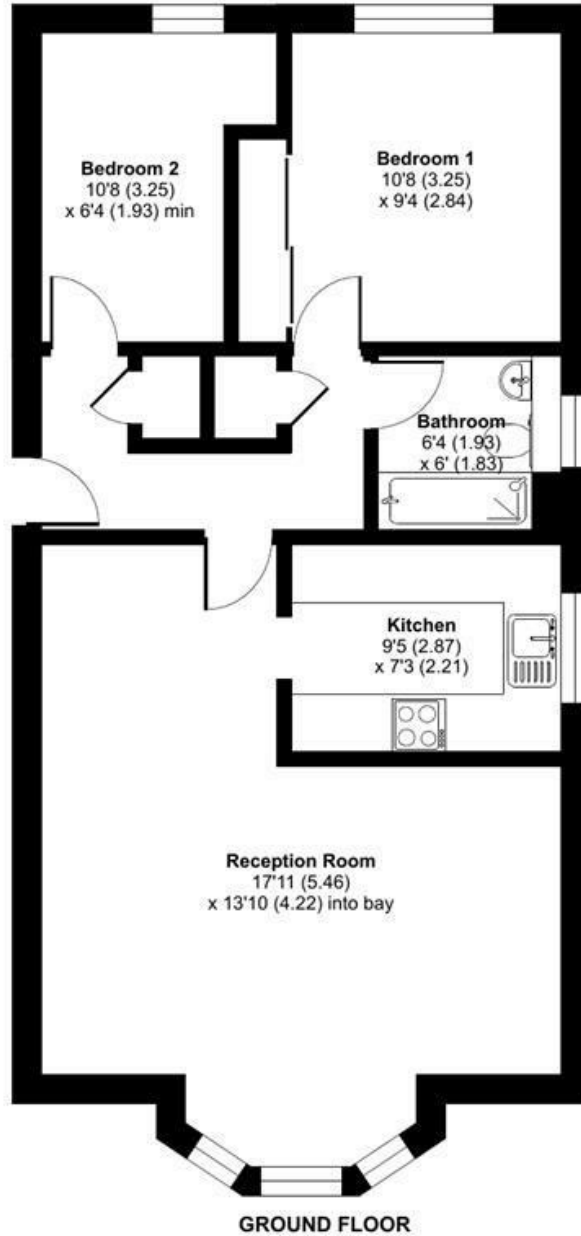
Guide Price £375,000 Leasehold - Share of Freehold

EPC Rating: E

Portsmouth Road, Surbiton, KT6

Approximate Area = 670 sq ft / 62.2 sq m

For identification only - Not to scale



Floor plan produced in accordance with RICS Property Measurement Standards incorporating International Property Measurement Standards (IPMS2 Residential). © nichecom 2024. Produced for Matthew James. REF: 1095230

We aim to make our property details a reliable guide. However they are not guaranteed and do not form part of a contract. Information in relation to lease length, service charge and ground rent has been provided by the vendor, they are likely to be subject to reviews and increases in the future and will need to be verified by your legal representative. Please note that appliances and heating systems have not been tested and therefore no warranty can be given as to their good working order. Carpets, curtains, gas fires, electrical goods/fitings and other fixtures, unless expressly mentioned, are not included in the sale of this property. If there are any important matters which are likely to affect your decision to buy, please contact our office.

