

ASKING PRICE OF

£450,000

Ensign House

SW18 1TA

PROPERTY SUMMARY

A desirable one-bedroom apartment with a private fabulous terrace. The immaculately presented property is located in the Battersea Reach riverside development. Secure underground parking is included in the sale.

1



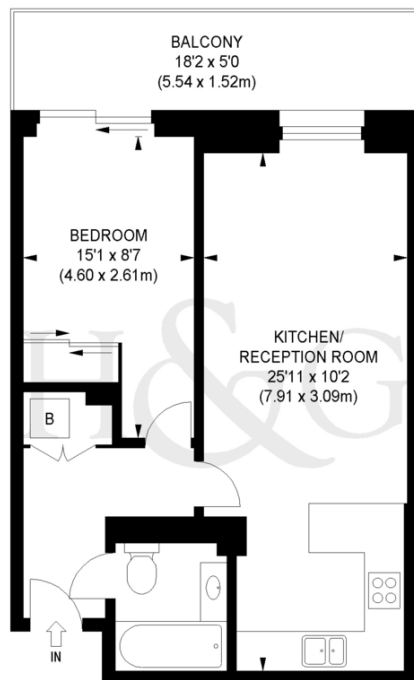
1



1







FIRST FLOOR

APPROX. GROSS INTERNAL FLOOR AREA 498 SQ FT / 46.24 SQ M

Illustration for identification purposes only, not to scale
All measurements are maximum, and includes wardrobes and window bays where applicable
Prepared by Pixangle © . Tel 020 8870 2118

LOCAL AUTHORITY

Wandsworth Borough Council

TENURE

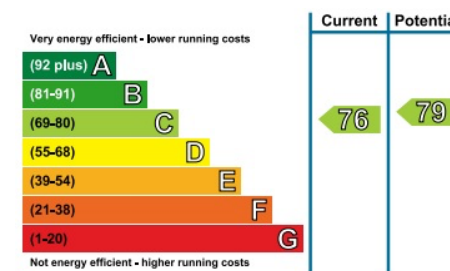
Leasehold

COUNCIL TAX BAND

Band E

VIEWINGS

By prior appointment only



Agents Note: Whilst every care has been taken to prepare these particulars, they are for guidance purposes only. All measurements are approximate and are for general guidance purposes only and whilst every care has been taken to ensure their accuracy, they should not be relied upon and potential buyers/tenants are advised to recheck the measurements



4 Vicentia Court
Bridges Wharf
London
SW11 3GY

02073522455
info@hgproperty.co.uk
www.hgproperty.co.uk