



St. Katherines Road, Exeter, EX4

Offers Over £325,000





Key Features

- Semi Detached Home
- Three Bedrooms
- Loft Room
- Large Lounge / Dining Room
- Enclosed Garden
- Garage & Off Road Parking
- Great Location - Close To Shops
- Great travel links

after location close to the City Centre. Three double bedrooms, Loft Room, enclosed garden, garage with off road parking & more...

Nestled on the desirable St. Katherines Road, this delightful three-bedroom home offers a perfect blend of comfort and convenience. Located in the vibrant city of Exeter, this residence provides easy access to local amenities, schools, and transport links, making it an ideal choice for families and professionals alike.

The property features three generously sized bedrooms, an additional loft room, offering ample space throughout the home. The well-appointed bathroom ensures functionality and comfort for all. The spacious living area moving through to the dining room is perfect for entertaining guests or enjoying quiet family evenings.



In addition, the sleek & modern kitchen has all the essentials plus ample space for cooking and storage.

The garden is a good size providing a seating / dining area also with a laid lawn space, where a timber summer house is located which is a great place to read a book in the summer.

With a single garage providing additional storage space, this home caters to all your practical needs. St. Katherines Road is a sought-after address in Exeter, known for its friendly neighbourhood and convenient location.

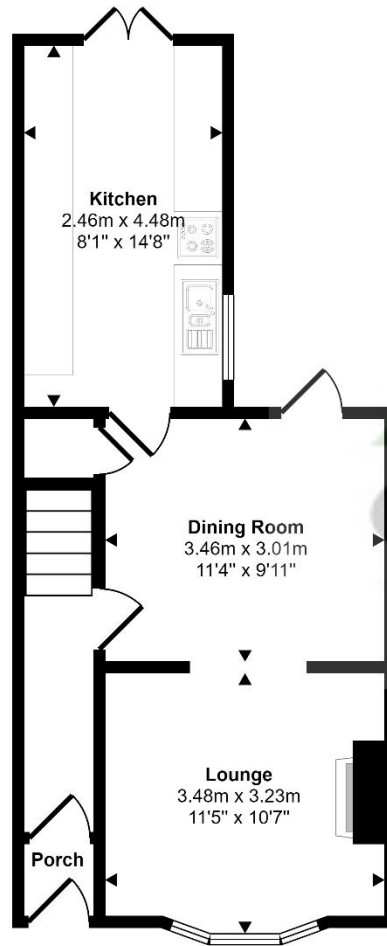
Don't miss out on this fantastic opportunity to own a charming home in one of Exeter's most desirable areas. Contact Smart Estate Agent Ltd today to arrange a viewing!







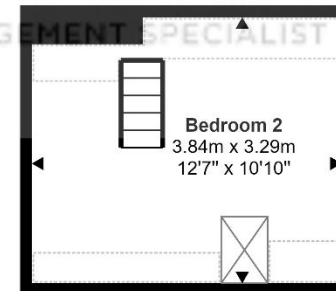
Approx Gross Internal Area
108 sq m / 1167 sq ft



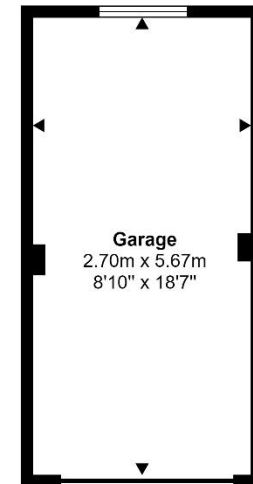
Ground Floor
Approx 39 sq m / 423 sq ft



First Floor
Approx 41 sq m / 443 sq ft



Second Floor
Approx 13 sq m / 136 sq ft



Garage
Approx 15 sq m / 165 sq ft

Denotes head height below 1.5m

This floorplan is only for illustrative purposes and is not to scale. Measurements of rooms, doors, windows, and any items are approximate and no responsibility is taken for any error, omission or mis-statement. Icons of items such as bathroom suites are representations only and may not look like the real items. Made with Made Snappy 360.