



Moray Road, N4 3LG

Guide Price £475,000  
Share of Freehold





# Moray Road N4

Welcome to this charming one-bedroom Victorian conversion with private section of garden, nestled on Moray Road in N4.

As you enter, you'll be greeted by a spacious reception room, featuring a stunning cast-iron fireplace and a large bay window that floods the space with natural light. A central hallway provides a convenient area for coats and boots, and access to all rooms. The bathroom is well-appointed with a shower-bath combination, WC, and a pedestal hand basin with vanity storage above.

Toward the rear, a comfortable double bedroom with useful built-in storage and a large window provides views of the leafy garden.

Next door, a modern galley-style kitchen flows effortlessly into a stunning conservatory dining area. Bathed in natural light and surrounded by greenery, it's the perfect setting for enjoying meals with friends. From here, step out into the secluded patio garden - a private oasis ideal for relaxation or entertaining guests.

Moray Road is a peaceful, no-through road in the heart of Finsbury Park, offering convenient access to Finsbury Park station (Victoria & Piccadilly lines, National Rail and Thameslink services). Nearby Stroud Green Road provides a wonderful selection of coffee shops, bars, and local eateries. Additionally, the City North development, with its M&S Foodhall, theatre, and Picturehouse cinema, is just a stone's throw away. For outdoor enthusiasts, the popular Parkland Walk nature reserve and Wray Crescent open space are both within walking distance, perfect for dog walking, jogging, or a leisurely stroll.

With its prime location in N4 and a perfect blend of Victorian charm and contemporary living, this flat makes for an ideal first-time purchase or rental investment.

Chain free | Ground floor | One double bedroom | Private patio garden | Separate reception with fireplace and bay window | Galley style kitchen | Conservatory dining space | Wonderfully light and airy | Convenient for local transport | A wonderful selection of local amenities on your doorstep



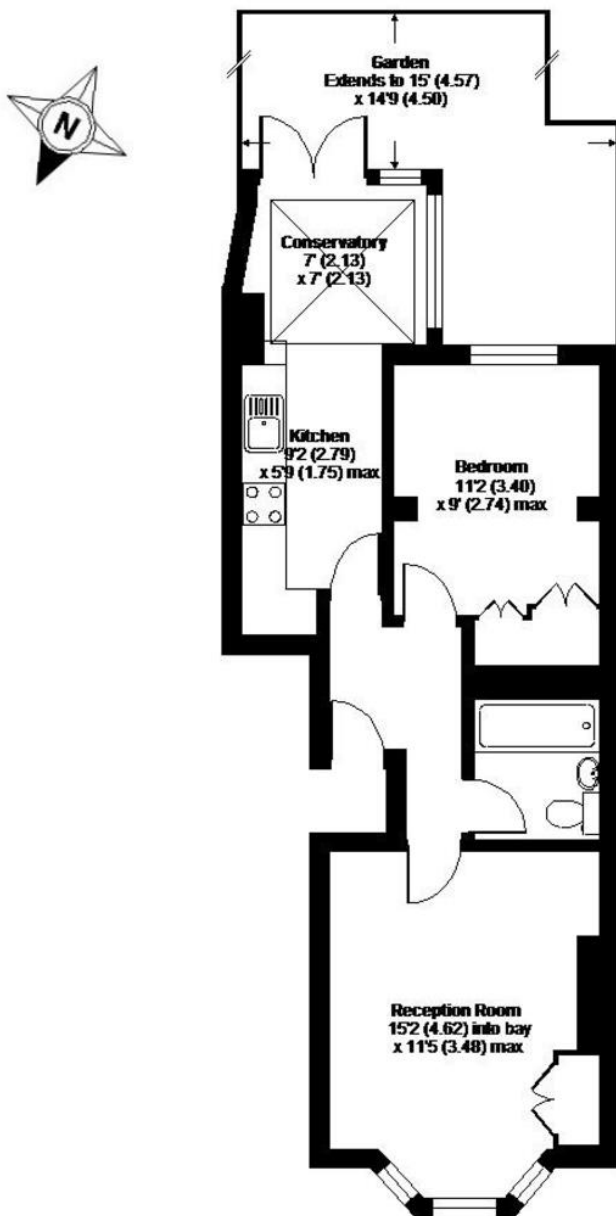






# Moray Road, London, N4

APPROX. GROSS INTERNAL FLOOR AREA 514 SQ FT 47.7 SQ METRES



Whilst every attempt has been made to ensure the accuracy of the floor plan contained here, measurements of doors, windows and rooms are approximate and no responsibility is taken for any error, omission or misstatement. These plans are for representation purposes only as defined by RICS Code of Measuring Practice and should be used as such by any prospective purchaser. Specifically no guarantee is given on the total square footage of the property if quoted on this plan. Any figure given is for initial guidance only and should not be relied on as a basis of valuation.

Copyright nichecom.co.uk 2015 Produced for David Andrew REF : 14708

# DAVID ANDREW

your most valuable asset

Archway Office

671 Holloway Road  
London, N19 5SE

T (0)20 7619 3750

Highbury Office

90 Highbury Park  
London N5 2XE

T (0)20 7354 9111

Stroud Green Office

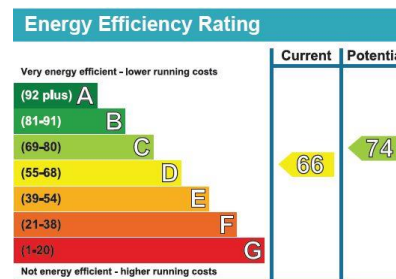
167 Stroud Green Road  
London N4 3PZ

T (0)20 7281 2000

General Contact

E [info@davidandrew.co.uk](mailto:info@davidandrew.co.uk)

W [www.davidandrew.co.uk](http://www.davidandrew.co.uk)



### Agent's Note:

Whilst Care has been exercised in the preparation of these sales particulars, statements about the property must not be relied upon as representations of statements or fact. Prospective purchasers must make and rely upon their own enquiries and those of professional representatives. The company accept not liability for any error contained in these particulars.

