



Q Apartments

Jewellery Quarter

B1 3JA

Asking Price Of **£245,000**

Secure, Allocated Parking

Two Double Bedrooms

Private Balcony with Views

Two Bathrooms



Property Description

DESCRIPTION *EWS1 FORM GRANTED* A well presented two-bedroom, two-bathroom apartment situated on the fifth floor of the popular Newhall Court development. Situated just a short walk from St Pauls Square, Jewellery Quarter amenities and the financial district. Offered with secure allocated parking space, a private balcony and set within a gated development.

LOCATION The Jewellery Quarter is a designated conservation area and proposed World Heritage Site and is already a prestigious and highly desired part of Birmingham. It is experiencing further development as some of the old factories are converted into apartments, restaurants and shops. It is only a short distance to all that Birmingham City Centre has to offer including the Colmore Business District.

The City Centre offers some of the best shopping in the country. The famous Bullring Shopping Centre is only around three quarters of a mile away and contains over 140 shops, including one of the only Selfridges department stores outside of London and the exclusive Mailbox development, which is host to a range of designer outlets including Armani and Harvey Nichols.

Transport: There are good links to the national motorway network, with excellent access to Birmingham International Airport and The National Exhibition Centre. The A38 Aston Expressway is only around half a mile away and leads directly onto Junction 6 of the M6 which itself is only some 3.5 miles distant. With the growing network links within Birmingham, the property is well situated with be located 300m away from Snow Hill Station

Tenure: Leasehold

Services: All mains' services are connected to the property.

Local Authority: Birmingham City Council

Council Tax Band: E

Service Charge: £2,500.00 Per Annum.

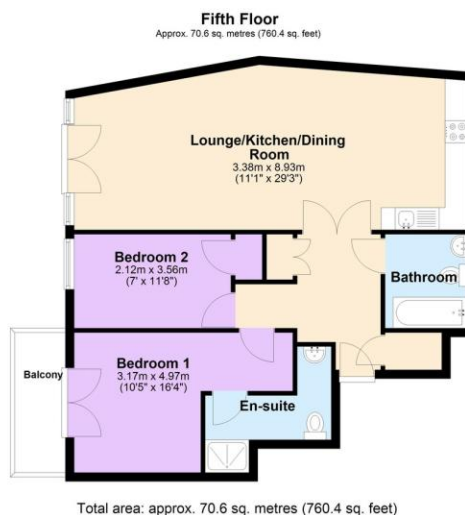
Ground Rent: £50.00 Per Annum

Ground Rent Review Period: TBC

Length of Lease: 976 Years Remaining.



Floor Layout



Total approx. floor area ()

Whilst every attempt has been made to ensure the accuracy of the floor plan contained here, measurements of doors, windows, rooms and any other items are approximate and no responsibility is taken for any error, omission, or mis-statement. This plan is for illustrative purposes only and should be used as such by any prospective purchaser. The services, systems and appliances shown have not been tested and no guarantee as to their operability or efficiency can be given. Made with Metropix ©2019.

Score	Energy rating	Current	Potential
92+	A		
81-91	B		81 B
69-80	C		
55-68	D	66 D	
39-54	E		
21-38	F		
1-20	G		