



MILE



Greenhill Road, London NW10

£1,200,000 Freehold

Welcome to Greenhill Road, NW10 – A Spacious Five-Bedroom Period Home with Endless Potential. This substantial five-bedroom semi-detached house is a rare find, offering incredible square footage and high ceilings throughout. Set on a sought-after residential street, the property retains many of its original period features while providing an exciting opportunity for modernisation and extension (subject to planning permission). With a south-facing garden, off-street parking, and a spacious cellar, this home is ideal for those looking to create their dream family residence or a lucrative investment. The property benefits from an existing HMO licence, which is valid until next year, making it an attractive option for investors. Situated in a prime location, Greenhill Road is well-connected with excellent transport links, including nearby Willesden Junction and Kensal Green stations, providing easy access to central London. The area is known for its vibrant community, green spaces, and a fantastic selection of independent cafés, restaurants, and shops. Offered chain-free, this is a fantastic opportunity to acquire a property with exceptional potential in a highly desirable location. Get in touch today to arrange a viewing!

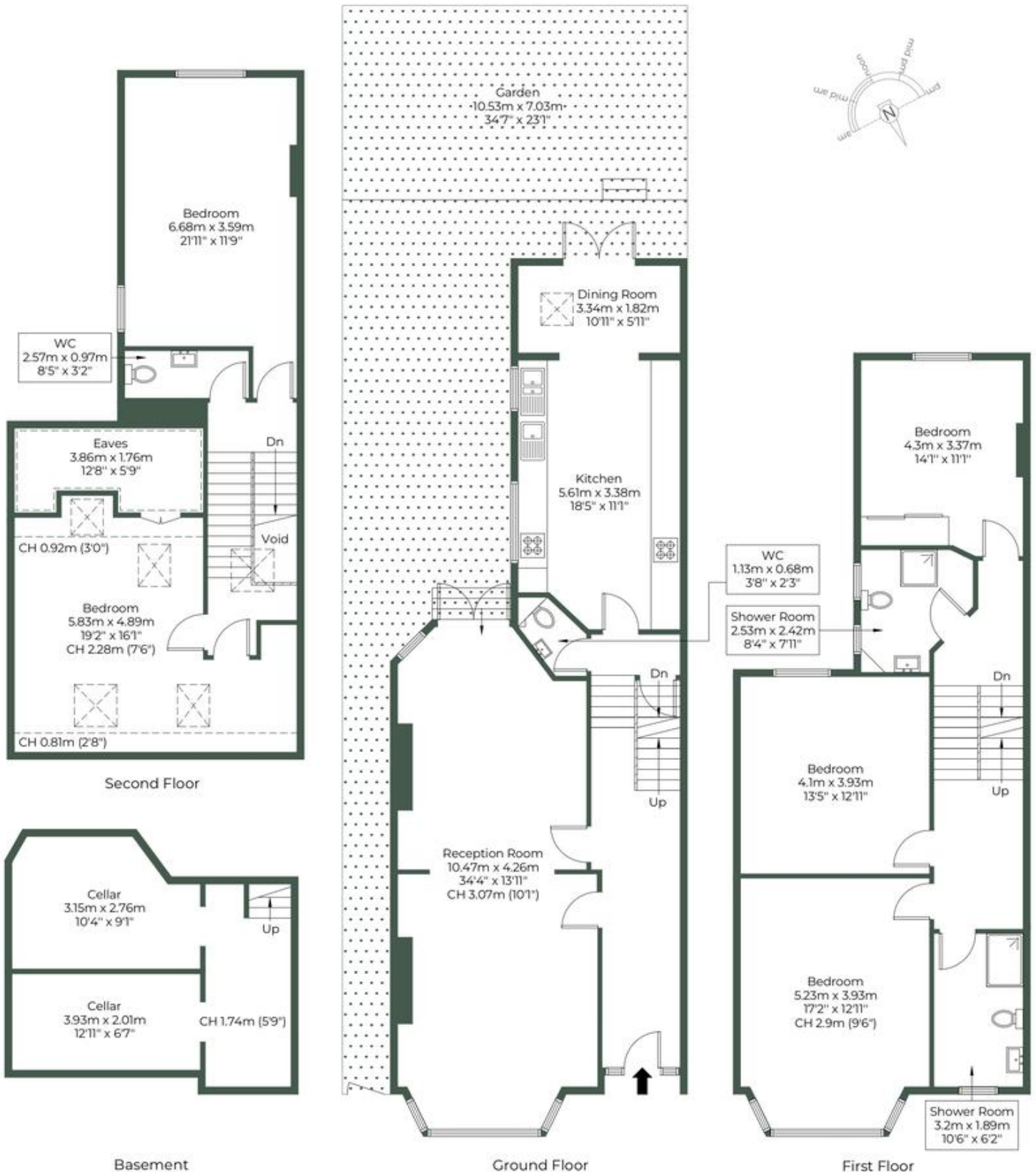
- Semi detached house
- Five bedroom HMO
- South facing garden
- Chain free
- Freehold
- Over 2500 sqft of living space
- Modernisation required
- Off street parking
- Potential to extend STPP
- Close to shops and transport

GREENHILL ROAD, NW10 8UE

Approximate Gross Internal Area = 237.9 sq.m / 2561 sq.ft

Restricted head height / Eaves = 10.8 sq.m / 116 sq.ft

Total = 248.7 sq.m / 2677 sq.ft



 = Reduced headroom below 1.5m / 5'0



MONEY LAUNDERING REGULATIONS 2003: Intending purchasers will be asked to produce identification documentation at a later stage and we would ask for your co-operation in order that there will be no delay in agreeing the sale.

General: While we endeavour to make our sales particulars fair, accurate and reliable, they are only a general guide to the property and, accordingly, if there is any point which is of particular importance to you, please contact the office and we will be pleased to check the position for you, especially if you are contemplating travelling some distance to view the property.

Measurements: These approximate room sizes are only intended as general guidance. You must verify the dimensions carefully before ordering carpets or any built-in furniture.

Services: Please note we have not tested the services or any of the equipment or appliances in this property, accordingly we strongly advise prospective buyers to commission their own survey or service reports before finalising their offer to purchase.