



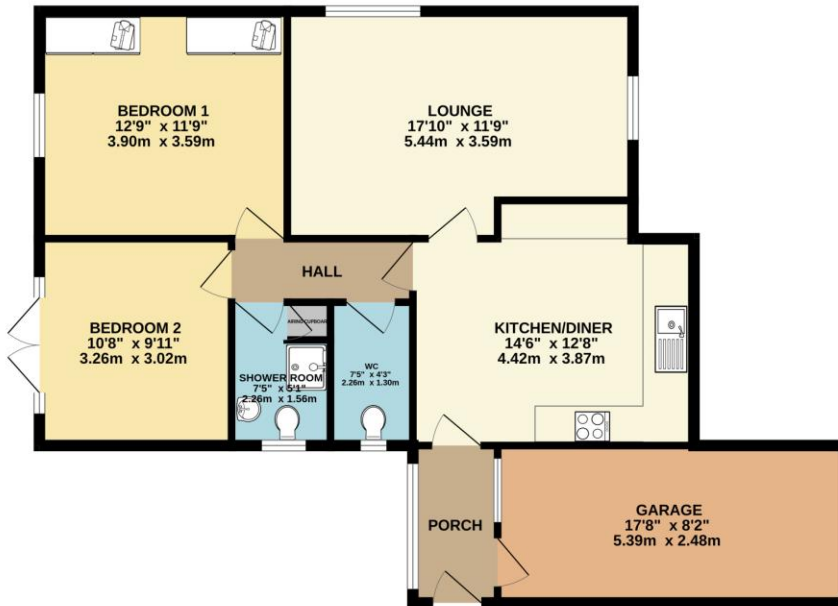
## FOR SALE

2 Bed Detached Bungalow in Gayhurst Close, Wigston, LE18 3WA  
£280,000

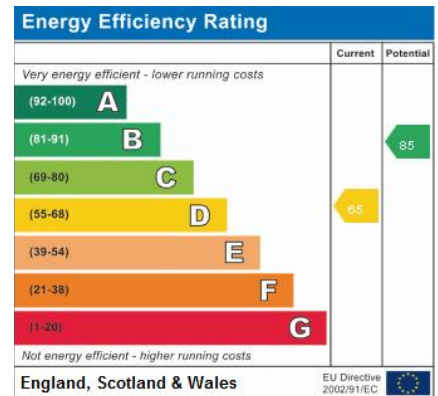
\*\*\* No Chain \*\*\* Located in the popular Meadows Estate of Wigston and nestled at the end of a quiet cul-de-sac sits this neatly presented two bedroom detached bungalow. The accommodation comprises entrance porch, kitchen/diner, lounge, two bedrooms, refurbished modified shower room, separate W.C, gardens, ample off road parking and garage. Call Phillips George to view.



GROUND FLOOR  
901 sq.ft. (83.7 sq.m.) approx.



TOTAL FLOOR AREA : 901 sq.ft. (83.7 sq.m.) approx.  
Whilst every attempt has been made to ensure the accuracy of the floorplan contained here, measurements of doors, windows, rooms and any other items are approximate and no responsibility is taken for any error, omission or mis-statement. This plan is for illustrative purposes only and should be used as such by any prospective purchaser. The services, systems and appliances shown have not been tested and no guarantee as to their operability or efficiency can be given.  
Made with Hergo 1/2024



- No Chain
- Detached Bungalow
- Two Bedrooms
- Quiet Cul-De-Sac
- Popular Location
- Refurbished Modified Shower Room
- Re-Decorated Throughout
- Local Amenities

**Agents Note:** Whilst every care has been taken to prepare these sales particulars, they are for guidance purposes only. All measurements are approximate and are for general guidance purposes only and whilst every care has been taken to ensure their accuracy, they should not be relied upon and potential buyers are advised to recheck the measurements.

