



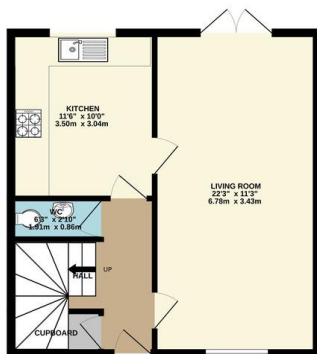
FOR SALE

3 Bed Detached House in Aitken Way, Loughborough LE11 2UL
£285,000

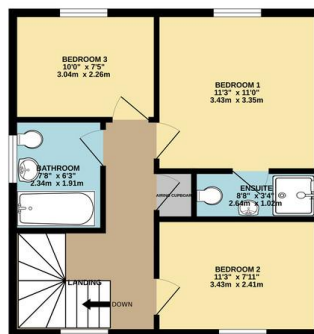
Offered chain free, this beautifully presented three bedroom detached family home is situated in a sought after modern development in Loughborough. Finished to a high standard throughout, the property features a spacious lounge, contemporary kitchen, master bedroom with en-suite shower room, off-road parking, and a garage. Early viewing is highly recommended. Contact Phillips George to arrange your viewing today.



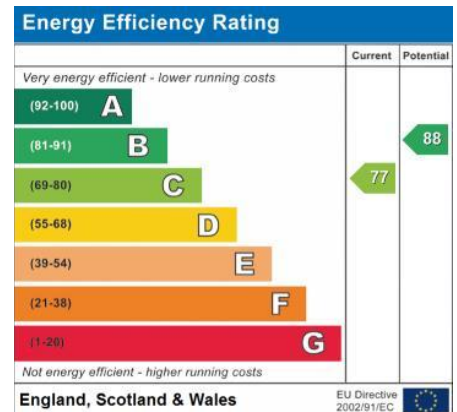
GROUND FLOOR
472 sq.ft. (43.8 sq.m.) approx.



1ST FLOOR
472 sq.ft. (43.8 sq.m.) approx.



TOTAL FLOOR AREA: 944 sq.ft. (87.7 sq.m.) approx.
Whilst every attempt has been made to ensure the accuracy of the floorplan contained here, measurements of doors, windows, rooms and any other items are approximate and no responsibility is taken for any error, omission or misstatement. This plan is for illustrative purposes only and should not be used as such for any prospective purchase. The services, systems and appliances shown have not been tested and no guarantee as to their operability or efficiency can be given.
Made with Metagix ©2025



- Detached
- Modern Property
- Three Bedrooms
- Highly Popular Location
- Well Presented Throughout
- Master Ensuite
- Off Road Parking
- Garage

Agents Note: Whilst every care has been taken to prepare these sales particulars, they are for guidance purposes only. All measurements are approximate are for general guidance purposes only and whilst every care has been taken to ensure their accuracy, they should not be relied upon and potential buyers are advised to recheck the measurements.

