



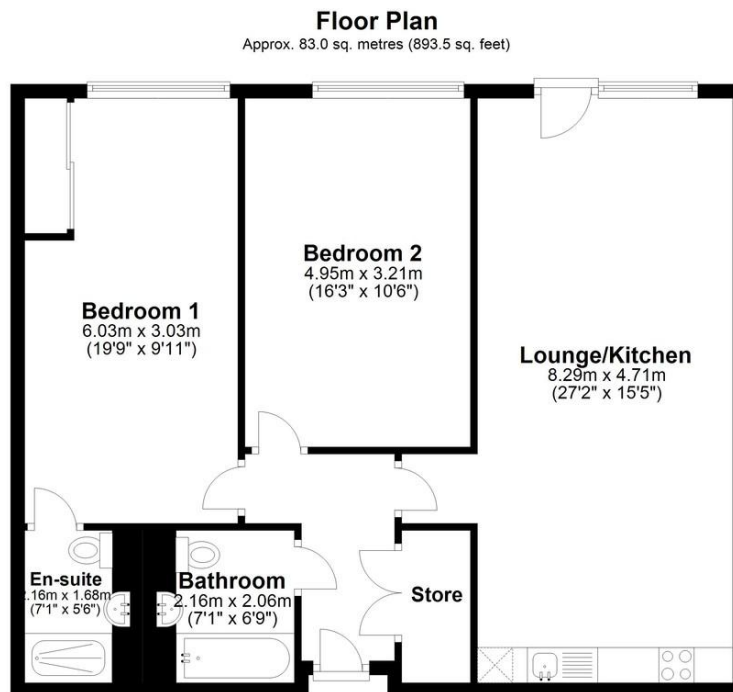
VOYAGER APARTMENTS

BIRMINGHAM, B16 8FP

£1150.00 PCM

VOYAGER | Two Bedrooms | Two bathrooms | Furnished | Parking | Available Now.

Davidson



Total area: approx. 83.0 sq. metres (893.5 sq. feet)

This floor plan is not to scale and is for illustration/marketing purposes only.
Plan produced using PlanUp.

Score	Energy rating	Current	Potential
92+	A		
81-91	B	84 B	86 B
69-80	C		
55-68	D		
39-54	E		
21-38	F		

Davidson

OFFICE

14 Frederick Road

Birmingham

West Midlands

B15 1JD

0121 455 7727

info@davidsonstates.co.uk

www.davidsonstates.co.uk

Agents Note: Whilst every care has been taken to prepare these particulars, they are for guidance purposes only. All measurements are approximate and are for general guidance purposes only and whilst every care has been taken to ensure their accuracy, they should not be relied upon and potential buyers/tenants are advised to recheck the measurements