



HAMBLEDON

ESTATE AGENTS

PLOT 23 24 BROADWEAVERS CLOSE WINCANTON



£410,000

- ◆ **BRAND NEW 4 BEDROOM DETACHED HOUSE**
- ◆ **OPEN PLAN KITCHEN/DINER ◆ SITTING ROOM**
- ◆ **ENTRANCE HALL ◆ MASTER BEDROOM WITH EN-SUITE**
- ◆ **CLOAKROOM ◆ BATHROOM ◆ SUNNY ASPECT GARDEN**
- ◆ **GAS CENTRAL HEATING ◆ DOUBLE GLAZED WINDOWS**
- ◆ **UTILITY ROOM ◆ PARKING ◆ EV CHARGING POINT**



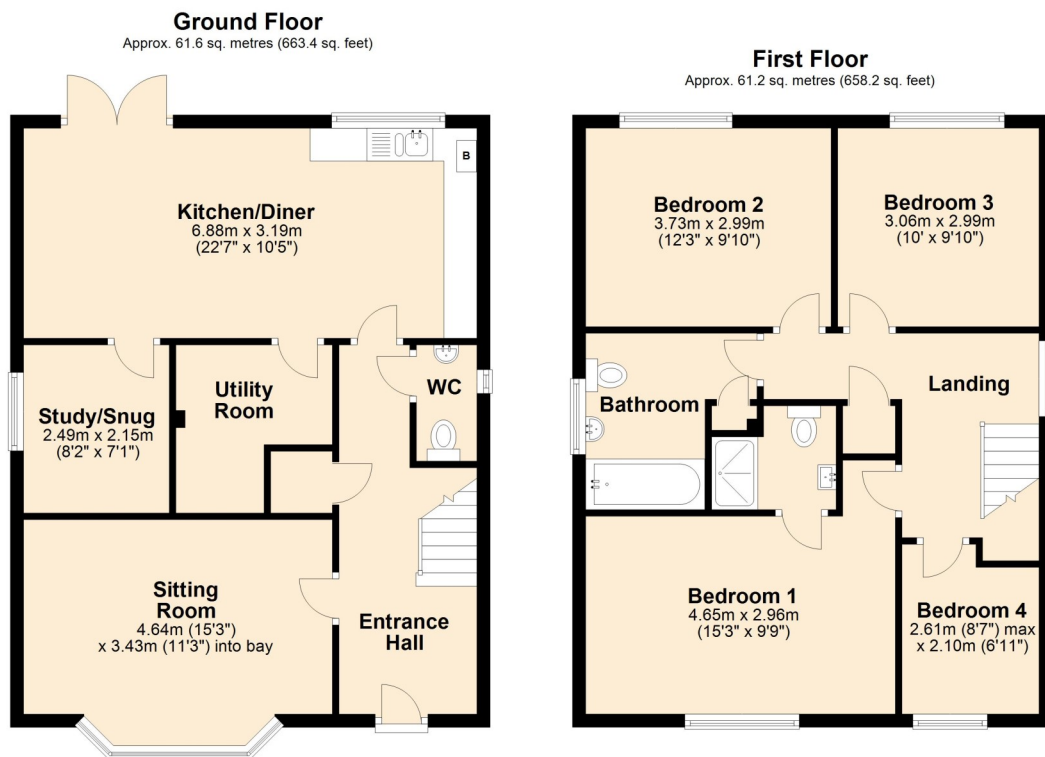
Tel: (01963) 34000 www.hambleton.net
19 High Street, Wincanton, Somerset BA9 9JT
Email: wincanton@hambleton.net

Plot 23, 24 Broadweavers Close, Wincanton, Somerset, BA9 9QP.

Broadweavers Close is an exciting new development of traditionally built two and three bedroom bungalows along with three and four bedroom houses situated in a wonderful location within walking distance of the historic town centre of Wincanton, and within easy reach of the A303.

The 34 new homes are beautifully finished, mostly in red and buff brick and some in crisp render to complement the delightful setting. Every property comes with contemporary fitted kitchens and bathrooms, gas central heating, excellent wall and loft insulation and double glazing as standard. This means your home is thermally efficient, comfortable, and stylish

Plot 23 is a four bedroom detached house with red brick and render elevations. The property enjoys a large kitchen/diner with French doors opening to the rear garden, snug/study, utility room, family bathroom, double width driveway with space for four cars, sitting room with large bay window, cloakroom, master bedroom with en-suite shower room and EV car charging point.



Total area: approx. 122.8 sq. metres (1321.6 sq. feet)

