



3 BEDROOM HOUSE WITH FAR REACHING VIEWS AND SUNNY GARDEN. GUIDE PRICE £425,000

60 Woodcrest Walk, Reigate, RH2 0JL

Tucked away in a peaceful cul-de-sac, this delightful 3-bedroom home offers stunning views and an enviable location close to the local gym and train station. Step inside to a bright, open-plan sitting/dining room, a stylish fitted kitchen, and three well-proportioned bedrooms, complemented by a sleek, modern family bathroom. Outside, soak up the sun on the private patio and enjoy the beautifully kept south-facing garden—perfect for relaxing or entertaining. The property also benefits from an en-bloc garage and convenient on-road parking. A must-see gem combining comfort, convenience, and charm. council tax band C. EPC awaited.

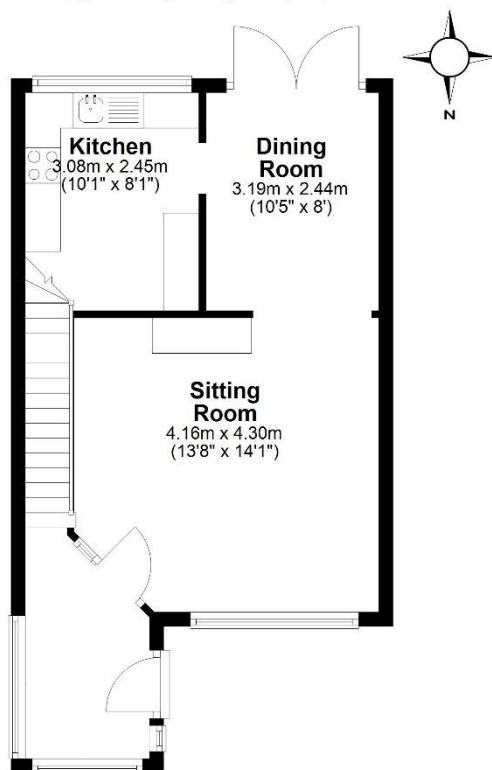


lewis
white



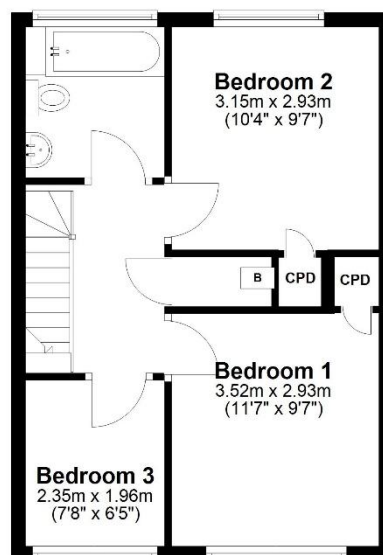
Ground Floor

Approx. 40.5 sq. metres (436.1 sq. feet)



First Floor

Approx. 38.2 sq. metres (411.4 sq. feet)



Total area: approx. 78.7 sq. metres (847.4 sq. feet)



Council tax band: C EPC: Awaited.

Lewis White Estate Agents, Somers House, Linkfield Corner, RH1 1BB. 01737 245779 info@lewiswhite.net www.lewiswhite.net