



Maen Ganol, ##Invalid offers in excess of £180,000

- Council Tax Band B
- No onward chain
- Well-presented throughout
- Ideal first-time buy
- Popular location
- EPC Rating: D



 3  1  1



About the property

This charming end of terrace house is currently available for purchase with no onward chain. Maintained in good condition, the property exudes an inviting atmosphere that makes it a comfortable and appealing residence. The house offers a spacious layout which includes a single reception room, a practical kitchen, three comfortable bedrooms, and a well-appointed bathroom.

One of the standout features of this house is its location. Positioned with convenient access to public transport links, the property ensures easy commutes. For families with children, the vicinity of local schools is a significant advantage. The property is also surrounded by local amenities, adding to the convenience of everyday living. For those who enjoy outdoor activities, the walking routes nearby offer the perfect opportunity to take in the beautiful views that this location has to offer.

The house also boasts a garden, which presents a wonderful space for outdoor relaxation and entertainment. This outdoor space combined with the beautiful views enhances the overall appeal of the property, making it ideal for those who appreciate a blend of indoor and outdoor living.



Accommodation

Hall

Dining Room

11' 4" Max x 9' 5" Max (3.45m Max x 2.87m Max)

Kitchen

11' 3" Max x 11' Max (3.43m Max x 3.35m Max)

Living Room

11' 4" Max x 14' 9" Max (3.45m Max x 4.50m Max)

Landing

Bedroom 1

11' 4" Max x 14' 9" Max (3.45m Max x 4.50m Max)

Bedroom 2

11' 4" Max x 8' 6" Max (3.45m Max x 2.59m Max)

Bedroom 3

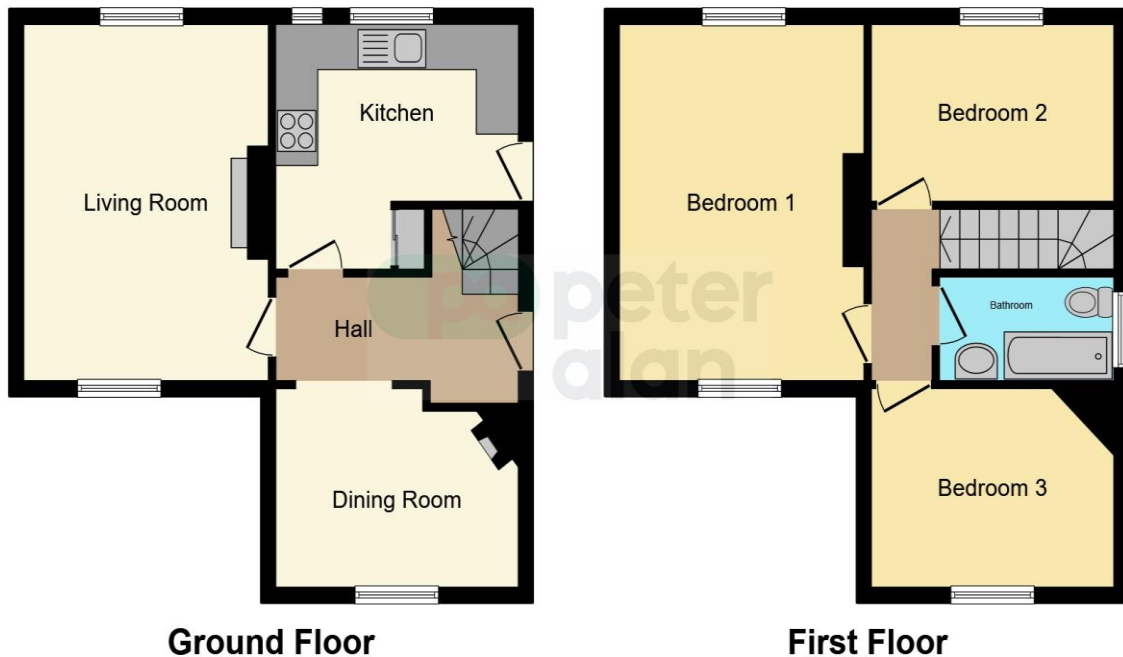
11' 4" Max x 7' 7" Max (3.45m Max x 2.31m Max)

Bathroom

01685 722223

merthytydfil@peteralan.co.uk

Floorplan



This floor plan is for illustrative purposes only. It is not drawn to scale. Any measurements, floor areas (including any total floor area), openings and orientation are approximate. No details are guaranteed, they cannot be relied upon for any purpose and they do not form part of any agreement. No liability is taken for any error, omission or misstatement. A party must rely upon its own inspection(s). Powered by www.focalagent.com



Important Information

Note while we endeavour to make our sales details accurate and reliable, if there is any point which is of particular interest to you, please contact the office and we will be pleased to confirm the position for you. We have not personally tested any apparatus, equipment, fixtures, fittings or services and cannot verify they are in working order or fit for their purposes. Nothing in these particulars is intended to indicate that carpets or curtains, furnishings or fittings, electrical goods (whether wired or not). Gas fires or light fittings or any other fixtures not expressly included form part of the property offered for sale. This computer generated Floorplan, if applicable, is intended as a general guide to the layout and design of the property. It is not to scale and should not be relied upon for dimensions. Tenure: We cannot confirm the tenure of the property as we have not had access to the legal documents. The buyer is advised to obtain verification from their solicitor or surveyor.

Peter Alan Limited is registered in England and Wales under company number 2073153, Registered Office is Cumbria House, 16-20 Hockliffe Street, Leighton Buzzard, Bedfordshire, LU7 1GN. VAT Registration Number is 500 2481 05. For activities relating to regulated mortgages and non-investment insurance contracts, Peter Alan Limited is an appointed representative of Connells Limited which is authorised and regulated by the Financial Conduct Authority. Connells Limited's Financial Services Register number is 302221. Most buy-to-let