



Moorhen Drive, London

£390,000 Leasehold

Situated in the sought-after Hendon Waterside development, this modern one-bedroom apartment in Peregrine Apartments offers a perfect blend of comfort, style, and convenience.

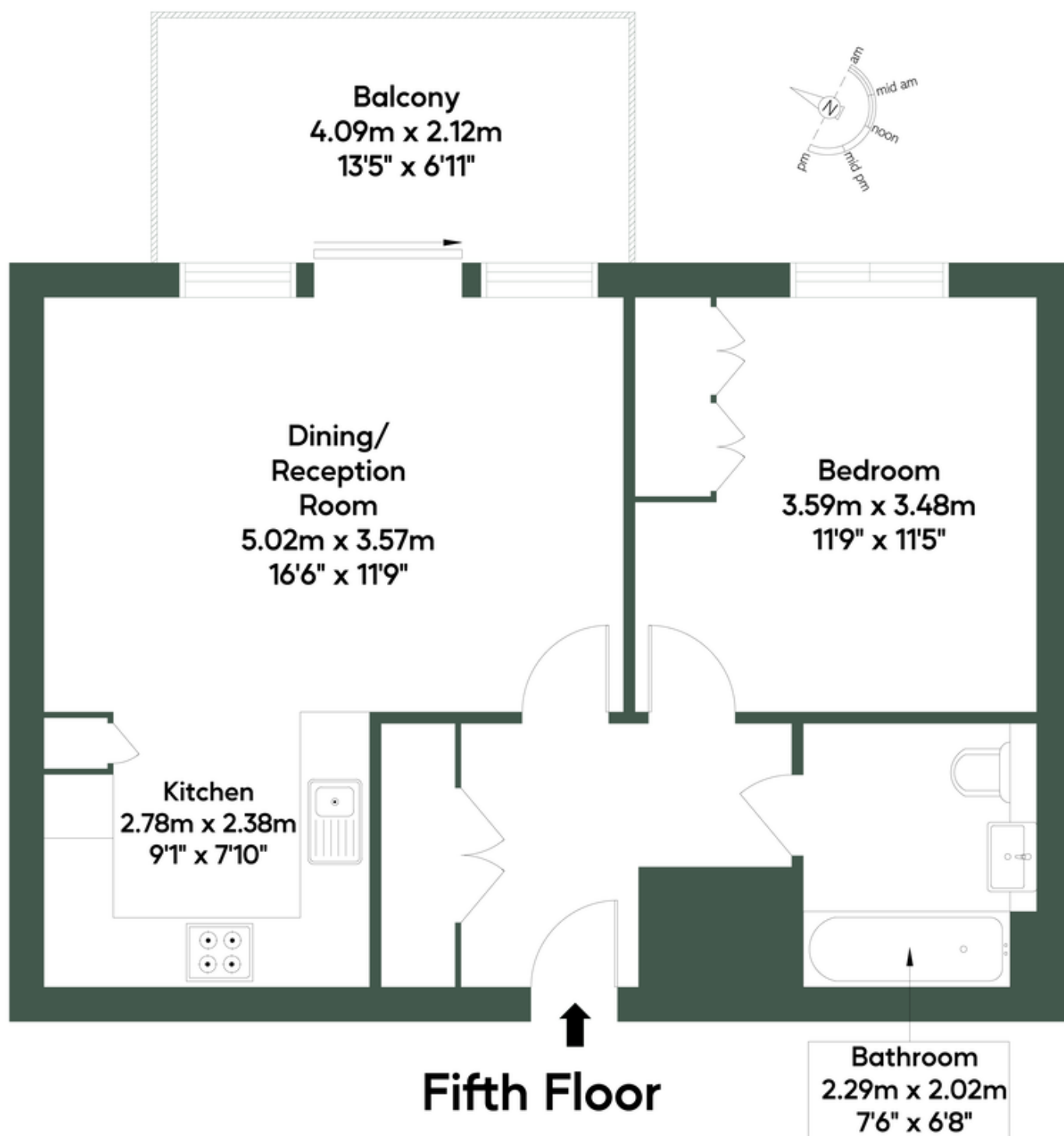
The apartment has stunning views over the landscaped gardens and nearby Welsh Harp Reservoir, the property features an open-plan living and kitchen area, a spacious double bedroom, and a sleek modern bathroom. Floor-to-ceiling windows allow for plenty of natural light, enhancing the sense of space and serenity throughout.

EPC RATING B

- Highly Sought After Development
- High Spec Finish
- One Bedroom Flat
- Private Balcony
- BRIGHT AND AIRY
- EPC Rating B
- MUST BE SEEN!!

PEREGRINE APARTMENTS, NW9

Approximate Gross Internal Area = 49.85 sq.m / 537 sq.ft



M4 MILE

MONEY LAUNDERING REGULATIONS 2003: Intending purchasers will be asked to produce identification documentation at a later stage and we would ask for your co-operation in order that there will be no delay in agreeing the sale.

General: While we endeavour to make our sales particulars fair, accurate and reliable, they are only a general guide to the property and, accordingly, if there is any point which is of particular importance to you, please contact the office and we will be pleased to check the position for you, especially if you are contemplating travelling some distance to view the property.

Measurements: These approximate room sizes are only intended as general guidance. You must verify the dimensions carefully before ordering carpets or any built-in furniture.

Services: Please note we have not tested the services or any of the equipment or appliances in this property, accordingly we strongly advise prospective buyers to commission their own survey or service reports before finalising their offer to purchase.