



## Maidstone Road, N11 2TQ

**£379,995 LEASEHOLD**

Bright, spacious, and superbly located—this fantastic two-bedroom apartment on the first floor of the popular Deanswood development offers over 700 sq ft of well-designed living space. Featuring two generous double bedrooms, a modern bathroom, a large separate living room over 20 feet long (perfect for entertaining with space for both a lounge and dining area), and a stylish kitchen with room for a dining table, this home ticks all the boxes. Additional perks include two hallway storage cupboards and access to well-kept communal gardens. Tucked away on quiet Maidstone Road, just 0.2 miles from Bounds Green Tube Station, you'll enjoy quick links into the city and the vibrant local scene of Bounds Green and Bowes Park—with all the amenities of bounds green right on your doorstep. A must-see for first-time buyers, professionals, or savvy investors looking for space, style, and convenience.

T: 0208 365 8900 E: [boundsgreen@wilkinsonbyrne.com](mailto:boundsgreen@wilkinsonbyrne.com) W: [www.wilkinsonbyrne.com](http://www.wilkinsonbyrne.com)



The Property Misdescriptions Act 1991: None of the statements contained in these particulars as to this property are to be relied on as statements of representations of fact. Wilkinson Byrne has not tested any equipment, fixtures or fittings or services and so cannot confirm that they are in working order. Wilkinson Byrne have not sighted the title documents and any reference to the tenure of the property is based on information supplied by the seller. Wilkinson Byrne are unable to confirm that the relevant Planning Permission and/or Building Regulation Approval has been obtained where any structural alterations have occurred. A buyer is advised to obtain verification from their solicitor or surveyor of any of the above or any other fact prior to making an offer. Photographs are provided for illustration purposes only and do not depict what is included in the sale. All measurements are taken using a sonic tape, are approximate and for guidance only.





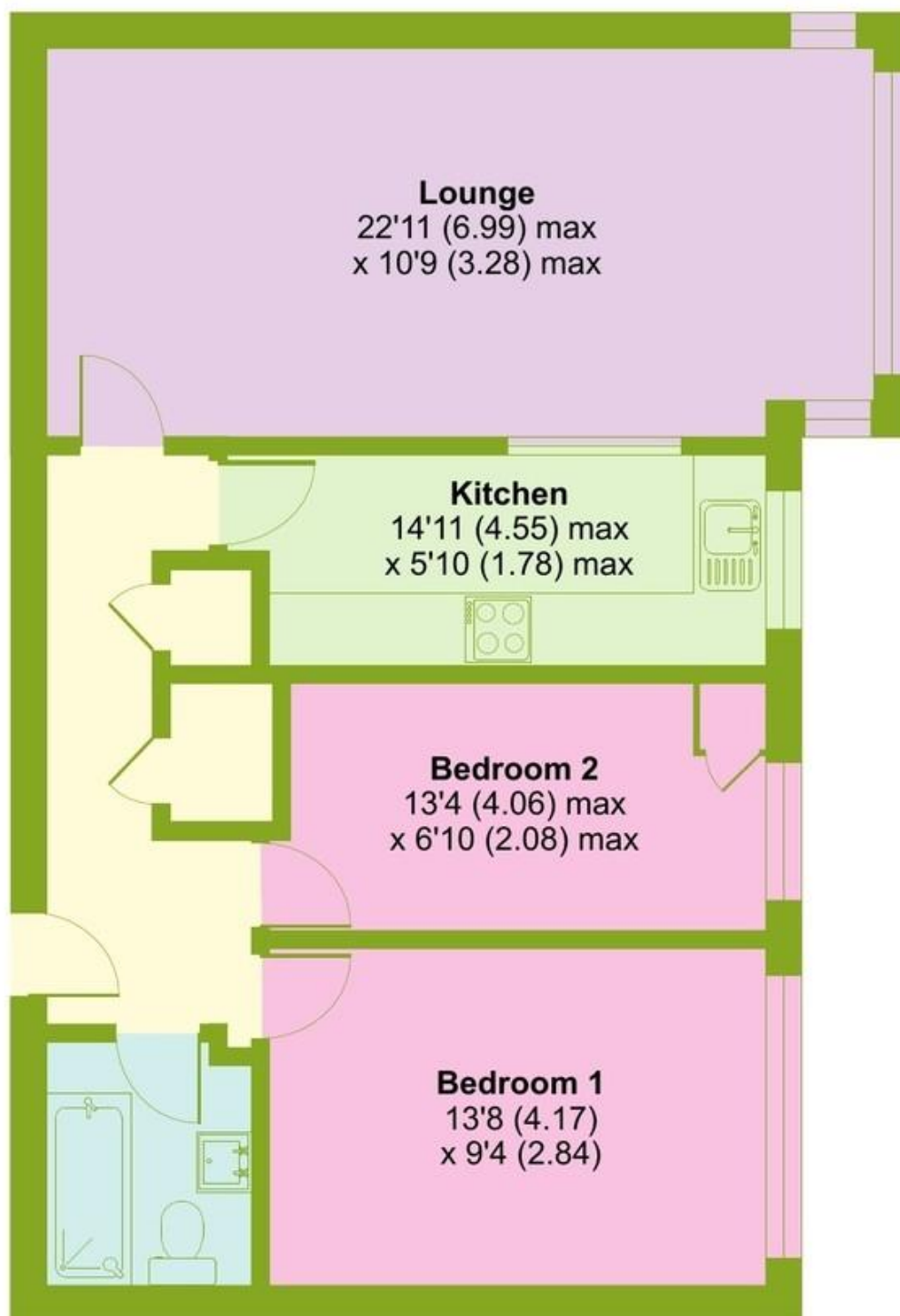


These particulars, whilst believed to be accurate set out as a general outline only for guidance and do not constitute any part of an offer or contract. Intending purchasers should not rely on them as fittings. Room sizes should not be relied upon for carpets and furnishings. The measurements given are approximate. No person in this firm's employment has the authority to make or give any representation or warranty in respect of the property.

# Maidstone Road, London, N11

Approximate Area = 710 sq ft / 66 sq m

For identification only - Not to scale



## SECOND FLOOR

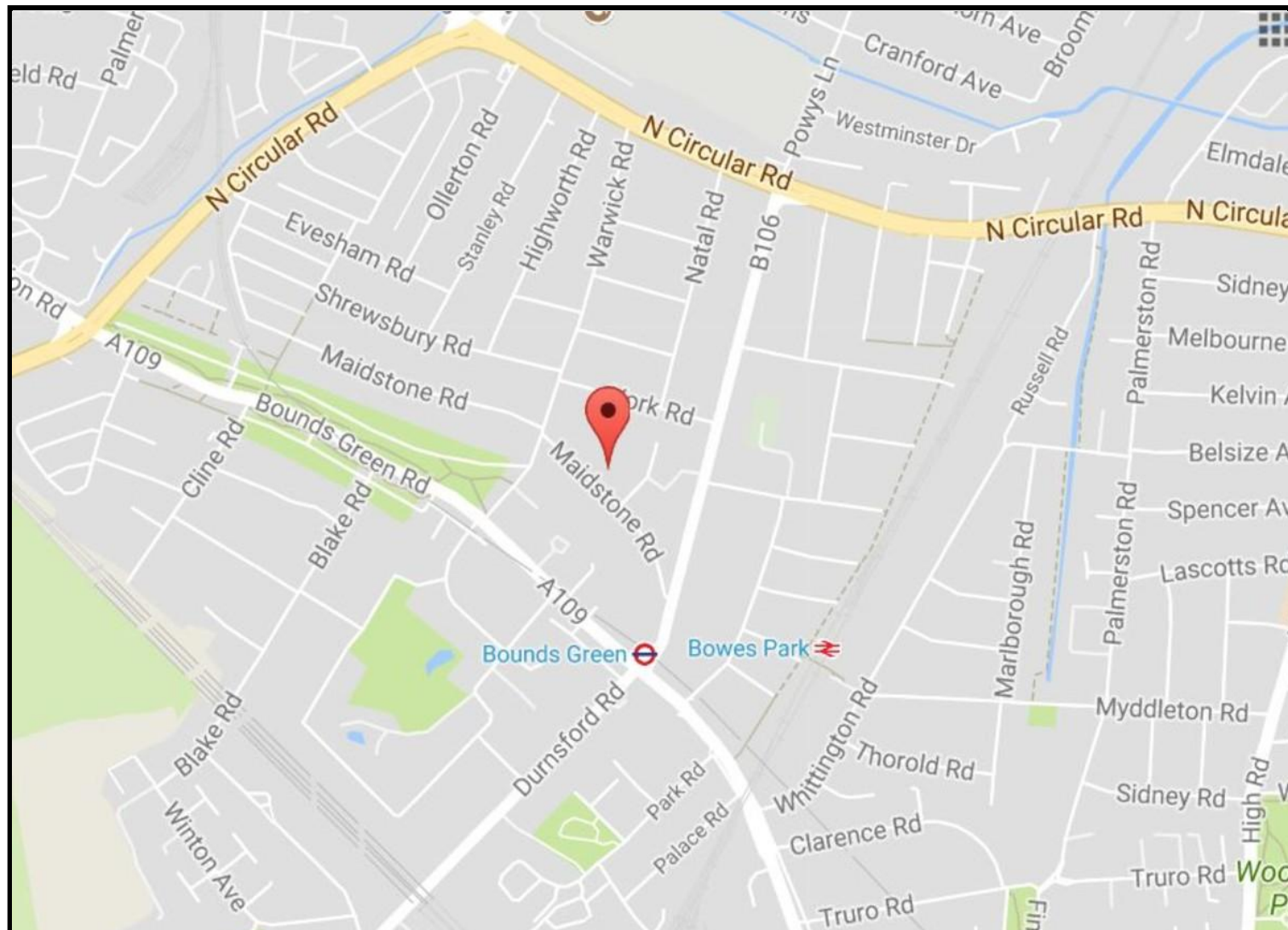


Floor plan produced in accordance with RICS Property Measurement 2nd Edition, Incorporating International Property Measurement Standards (IPMS2 Residential). Produced for Wilkinson Byrne. REF: 1298100

©nichecom 2025.







Score	Energy rating	Current	Potential
92+	A		
81-91	B		82 B
69-80	C	79 C	
55-68	D		
39-54	E		
21-38	F		
1-20	G		

Bouds Green Office  
 3 Latham Court  
 Brownlow Road  
 London N11 2ES  
 0208 - 365 - 8900  
[boudsgreen@wilkinsonbyrne.com](mailto:boudsgreen@wilkinsonbyrne.com)

Turnpike Lane Office  
 8 Turnpike Parade  
 Green Lanes  
 London N15 3EA  
 0208 - 888 - 0022  
[turnpikelane@wilkinsonbyrne.com](mailto:turnpikelane@wilkinsonbyrne.com)