



Wilshaw Close, London

£345,000 Leasehold

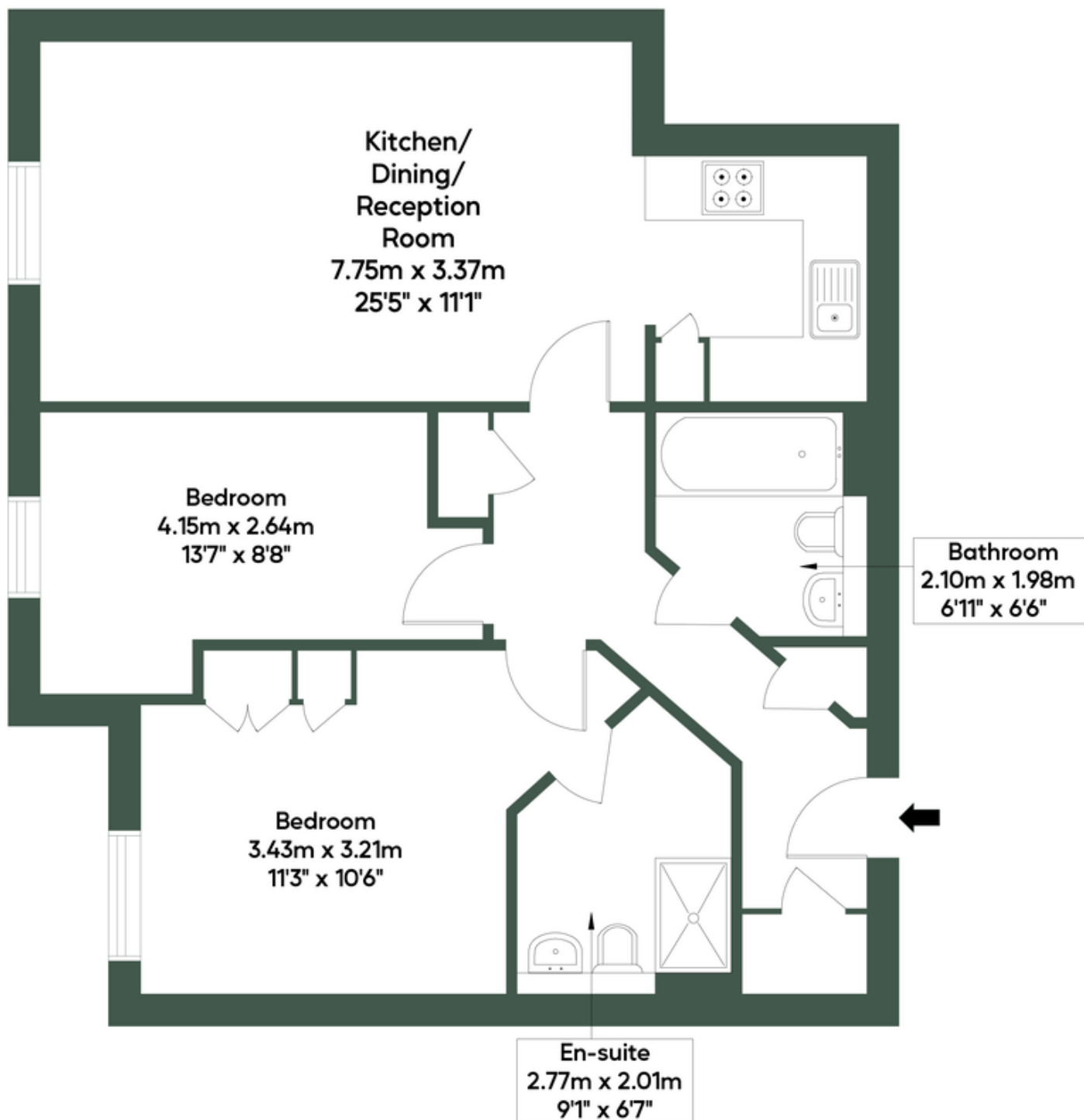
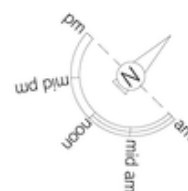
Nestled in a quiet residential cul-de-sac in the heart of Hendon, this beautifully presented two-bedroom, two-bathroom flat offers modern living in a prime North West London location. Set within a well-maintained development, the property benefits from a bright and spacious layout, perfect for professionals, couples, or small families.

The flat features a generous open-plan living and dining area, ideal for entertaining, with large windows that flood the space with natural light. The sleek, contemporary kitchen is fully fitted with integrated appliances and ample storage. The master bedroom includes a stylish en-suite shower room, while the second double bedroom is served by a modern family bathroom.

- Two Bedroom Apartment
- TWO DOUBLE BEDROOMS
- TWO BATHROOMS (ONE EN- SUITE)
- Private Garage
- Communal garden
- Allocated Parking
- HIGHLY SOUGHT AFTER LOCATION
- EPC RATING B
-
-

WILSHAW CLOSE, NW4

Approximate Gross Internal Area = 64.12 sq.m / 690 sq.ft



Second Floor

M MILE

MONEY LAUNDERING REGULATIONS 2003: Intending purchasers will be asked to produce identification documentation at a later stage and we would ask for your co-operation in order that there will be no delay in agreeing the sale.

General: While we endeavour to make our sales particulars fair, accurate and reliable, they are only a general guide to the property and, accordingly, if there is any point which is of particular importance to you, please contact the office and we will be pleased to check the position for you, especially if you are contemplating travelling some distance to view the property.

Measurements: These approximate room sizes are only intended as general guidance. You must verify the dimensions carefully before ordering carpets or any built-in furniture.

Services: Please note we have not tested the services or any of the equipment or appliances in this property, accordingly we strongly advise prospective buyers to commission their own survey or service reports before finalising their offer to purchase.