

Head Office:
Dixon Kelley Estate Agents
1 Penn Court
Station Road, West Moors
Dorset. BH22 0JJ

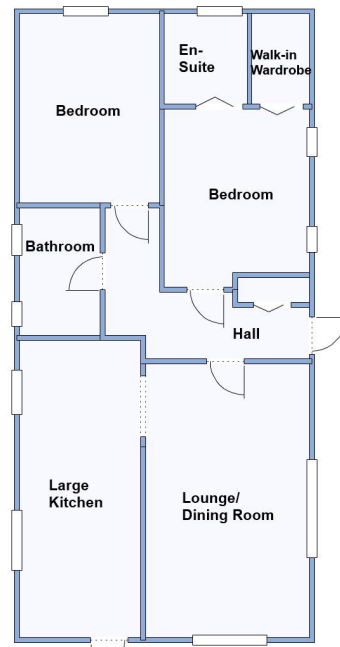
Telephone: 01202 877511

DORSET PARK HOMES

DRAFT

www.dorsetparkhomes.com

115 Pinehurst Park, West Moors, Ferndown, Dorset. BH22 0BS



This drawing has been prepared for diagrammatic purpose only. Not to scale.

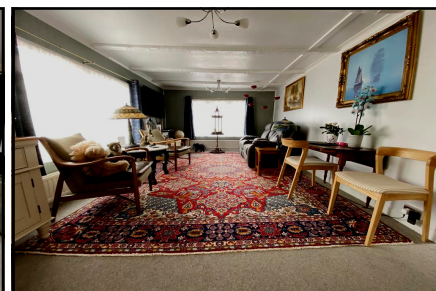
Superb Kitchen, En-Suite Shower Room & Bathroom

2-Bedroom Park Home - approx 42' x 20'

Accommodation & approximate room dimensions:

- Entrance Hall: Storage cupboards. Hatch to roof.
- Kitchen: approx 20' x 8'. Good range of modern floor and wall cupboards plus larder unit. Fitted cooker with filter hood over. Space for tall fridge/freezer, washing machine & tumble dryer. Range style cooker (optional purchase). Cupboard housing Worcester combination boiler. Door to garden.
- Lounge: approx 18'5" x 11'.
- Bedroom 1: approx 11'9" x 9'5". Walk-in wardrobe.
- En-Suite Shower Room: modern suite with Shower cubicle, wash basin, bidet & WC. Heated towel rail.
- Bedroom 2: approx 12'9" x 9'5". Fitted wardrobes.
- Bathroom: Modern suite. Panelled bath with shower over. Wash basin, bidet & WC. Heated towel rail.
- Gas Central Heating (New boiler installed 2023)
- PVCu Double-Glazing & Exterior Insulation System
- Delightful Patio Garden with 3 useful Sheds
- Parking on Plot for 2 cars
- Age Restriction 45+ Pets Considered
- Well Presented Park Home—Modernised in 2023
- Popular Residential Park near to amenities

Popular 'Pet Friendly' Park



Pitch Fee: approx £230.37 per month
Subject to Annual Review
Council Tax Band: 'A'

Tenure: 1983 Mobile Homes Act Agreement

Price: £185,000

VIEWING STRICTLY BY APPOINTMENT WITH THE VENDOR'S AGENT Dorset Park Homes 01202 877511

IMPORTANT NOTE: These particulars are believed to be correct but their accuracy is not guaranteed. They do not form part of any contract. Nothing in these particulars shall be deemed to be a statement that the property is in good structural condition or otherwise, nor that any of the services, appliances, equipment or facilities are in good working order or have been tested. Purchasers should satisfy themselves on such matters prior to purchase Ref.W05085

The recommended specialist in Park Home sales
Proprietor: Simon Dixon

